



Index - Levnedsmiddelfittings

Aktuator / Actuator	fra side / from page	32
Butterflyventiler / Butterfly valve	fra side / from page	32
Bøjninger / Elbows	fra side / from page	01
Clamps / Clamps	fra side / from page	26
- clampoversigt / Clamp surveys	fra side / from page	24
Hagenøgle / Spanner	fra side / from page	31
Kontraventil / check valves	fra side / from page	31
Konusser / reducers	fra side / from page	08
Miniclamps / mini clamps	fra side / from page	29
Rørholdere / Pipe supports	fra side / from page	11
Slangestuds / Hose Nozzle	fra side / from page	04
T-stykker / T-pcs.....	fra side / from page	05
Unioner / Unions	fra side / from page	16
- unionoversigt / union surveys.....	fra side / from page	14

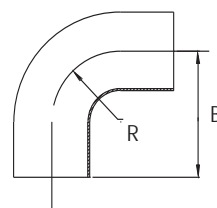
Bøjning N130

DS/SMS Svejst Bøjning, 90°

DS/SMS Welded elbow, 90°

Cert.: EN 10204/3.1

Dim. mm	B mm	R mm	Kg/ stk/pc	AISI 304		316L	
				Varenr. Article no.	Varenr. Article no.	Varenr. Article no.	Varenr. Article no.
25,0 x 1,2	55,0	25,0	0,067	● 25000	● 25001	● 25000	● 25001
32,0 x 1,2	64,0	32,0	0,101	● 25002	● 25003	● 25002	● 25003
38,0 x 1,2	70,0	38,0	0,138	● 25004	● 25005	● 25004	● 25005
51,0 x 1,2	82,0	51,0	0,208	● 25006	● 25007	● 25006	● 25007
63,5 x 1,6	105,0	64,0	0,440	● 25008	● 25009	● 25008	● 25009
76,1 x 2,0	110,0	76,0	0,645	● 25010	● 25011	● 25010	● 25011
101,6 x 2,0	150,0	150,0	1,107	● 25012	● 25013	● 25012	● 25013



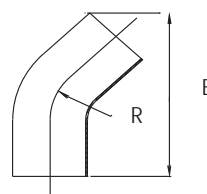
Bøjning N130

DS/SMS Svejst bøjning, 45°

DS/SMS Welded elbow, 45°

Cert.: EN 10204/3.1

Dim. mm	B mm	R mm	Kg/ stk/pc	AISI 304		316L	
				Varenr. Article no.	Varenr. Article no.	Varenr. Article no.	Varenr. Article no.
25,0 x 1,2	70,0	25,0	0,049	● 25014	● 25015	● 25014	● 25015
38,0 x 1,2	87,0	38,0	0,089	● 25016	● 25017	● 25016	● 25017
51,0 x 1,2	119,5	51,0	0,162	● 25018	● 25019	● 25018	● 25019
63,5 x 1,6	136,0	64,0	0,301	● 25020	● 25021	● 25020	● 25021
76,1 x 2,0	157,0	76,0	0,524	● 25022	● 25023	● 25022	● 25023
101,6 x 2,0	226,5	150,0	1,045	● 25024	● 25025	● 25024	● 25025



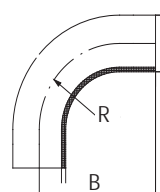
Bøjning N130

ISO Svejst bøjning, 90° lang

ISO Welded elbow, 90°, long type

Cert.: EN 10204/3.1

Dim. mm	B mm	R mm	Kg/ stk/pc	AISI 304		316L	
				Varenr. Article no.	Varenr. Article no.	Varenr. Article no.	Varenr. Article no.
25,0 x 1,2	65,0	37,5	0,053	● 18275	● 18285	● 18275	● 18285
38,0 x 1,2	85,0	57,0	0,167	● 18276	● 18286	● 18276	● 18286
51,0 x 1,2	110,0	76,5	0,297	● 18277	● 18287	● 18277	● 18287
63,5 x 1,6	135,0	95,3	0,538	● 18278	● 18288	● 18278	● 18288
76,1 x 1,6	155,0	114,2	0,770	● 18279	● 18289	● 18279	● 18289
101,6 x 2,0	195,0	152,5	1,588	● 18280	● 18290	● 18280	● 18290



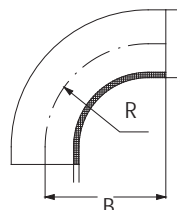
Bøjning N130

ISO Svejst bøjning, 90° kort

ISO Welded elbow, 90° short type

Cert.: EN 10204/3.1

Dim. mm	B mm	R mm	Kg/ stk/pc	AISI 316L	Varenr. Article no.
25,0 x 1,2	44	37,5	0,070	●	32842
38,0 x 1,2	64	57,0	0,130	●	32843
51,0 x 1,2	89	76,5	0,290	●	32844
63,5 x 1,6	114	95,3	0,590	●	32845
76,1 x 1,6	134	114,2	0,730	●	32846
101,6 x 2,0	174	152,5	1,130	●	32847



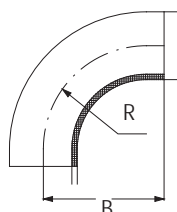
Bøjning N130

ISO Svejst bøjning, 90° ekstra kort

ISO Welded elbow, 90° extra short type

Cert.: EN 10204/3.1

Dim. mm	B mm	R mm	Kg/ stk/pc	AISI 316L	Varenr. Article no.
25,0 x 1,2	38,1	37,5	0,070	●	33411
38,0 x 1,2	57,2	57,0	0,130	●	33412
51,0 x 1,2	76,2	76,5	0,290	●	33413
63,5 x 1,6	95,2	95,3	0,590	●	33414
76,1 x 1,6	114,3	114,2	0,730	●	33415
101,6 x 2,0	152,4	152,5	1,130	●	33416



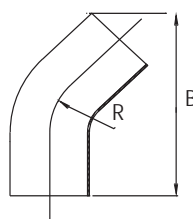
Bøjning N130

ISO Svejst bøjning, 45°

ISO Welded elbow, 45°

Cert.: EN 10204/3.1

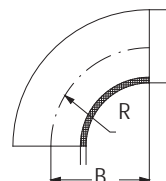
Dim. mm	B mm	R mm	Kg/ stk/pc	AISI 304	AISI 316L	Varenr. Article no.	Varenr. Article no.
25,0 x 1,2	70,0	25,0	0,050	●	●	18295	18305
38,0 x 1,2	87,0	38,0	0,088	●	●	18296	18306
51,0 x 1,2	119,5	51,0	0,156	●	●	18297	18307
63,5 x 1,6	136,0	64,0	0,300	●	●	18298	18308
76,1 x 1,6	157,0	76,0	0,400	●	●	18299	18309
101,6 x 2,0	226,5	150,0	1,036	●	●	18300	18310



Bøjning N130
DIN Svejst bøjning, 90°
DIN Welded elbow, 90°

Cert.: EN 10204/3.1

Dim. mm	DIN DN	B mm	R mm	Kg/ stk/pc	AISI 316L	Varenr. Article no.
12,0 x 1,5	10	26,0	26,0	0,014	● 32848	● 32848
13,0 x 1,5	10	26,0	26,0	0,013	● 34130	● 34130
18,0 x 1,5	15	35,0	35,0	0,032	● 32849	● 32849
19,0 x 1,5	15	35,0	35,0	0,032	● 34131	● 34131
22,0 x 1,5	20	40,0	40,0	0,046	● 32850	● 32850
23,0 x 1,5	20	40,0	40,0	0,046	● 34132	● 34132
28,0 x 1,5	25	50,0	50,0	0,070	● 32851	● 32851
29,0 x 1,5	25	50,0	50,0	0,070	● 34133	● 34133
35,0 x 1,5	32	55,0	55,0	0,085	● 34169	● 34169
40,0 x 1,5	40	60,0	60,0	0,130	● 32852	● 32852
41,0 x 1,5	40	60,0	60,0	0,130	● 34134	● 34134
52,0 x 1,5	50	70,0	70,0	0,200	● 32853	● 32853
53,0 x 1,5	50	70,0	70,0	0,200	● 34135	● 34135
70,0 x 2,0	65	80,0	80,0	0,350	● 32854	● 32854
85,0 x 2,0	80	90,0	90,0	0,540	● 32855	● 32855
104,0 x 2,0	100	100,0	100,0	0,730	● 32856	● 32856
129,0 x 2,0	125	187,5	187,5	1,870	● 32857	● 32857
154,0 x 2,0	150	225,0	225,0	2,696	● 32858	● 32858
204,0 x 2,0	200	300,0	300,0	4,750	● 32859	● 32859
254,0 x 2,0	250	375,0	375,0	8,875	● 32860	● 32860



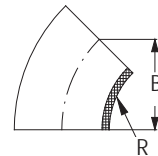
Bøjning N130

DIN Svejst bøjning, 45°

DIN Welded elbow, 45°

Cert.: EN 10204/3.1

Dim. mm	DIN DN	B mm	R mm	Kg/ stk/pc	AISI 316L	Varenr. Article no.
13,0 x 1,5	10	17,0	26,0	0,010	● 34136	● 34136
19,0 x 1,5	15	23,0	35,0	0,017	● 34137	● 34137
23,0 x 1,5	20	27,0	40,0	0,025	● 34138	● 34138
29,0 x 1,5	25	34,0	50,0	0,040	● 34139	● 34139
35,0 x 1,5	32	37,0	55,0	0,055	● 34170	● 34170
41,0 x 1,5	40	41,0	60,0	0,070	● 34140	● 34140
53,0 x 1,5	50	48,0	70,0	0,100	● 34141	● 34141
70,0 x 2,0	65	55,5	80,0	0,200	● 32864	● 32864
85,0 x 2,0	80	62,6	90,0	0,290	● 32865	● 32865
104,0 x 2,0	100	69,6	100,0	0,380	● 32866	● 32866
129,0 x 2,0	125	131,5	187,5	0,935	● 32867	● 32867
154,0 x 2,0	150	158,0	225,0	1,340	● 32868	● 32868



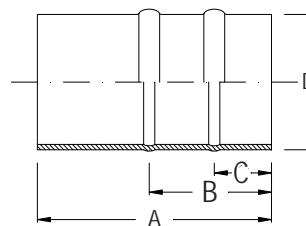
Slangestuds N165

DS/SMS/ISO Slangestuds

DS/SMS/ISO Hose Nozzle

Cert.: EN 10204/3.1

Dim. mm	A mm	B mm	C mm	D mm	Kg/ stk/pc	AISI 316 L	Varenr. Article no.
25,0	60,0	35,0	15,0	25,4	0,030	● 34184	● 34184
38,0	80,0	45,0	20,0	38,1	0,090	● 34185	● 34185
51,0	90,0	45,0	20,0	50,8	0,140	● 34186	● 34186
63,5	100,0	50,0	25,5	63,5	0,270	● 34187	● 34187
76,1	110,0	55,0	25,0	76,1	0,350	● 34188	● 34188
101,6	120,0	65,0	26,0	102,0	0,490	● 34189	● 34189



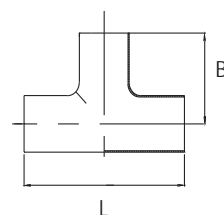
T-stykke N131

DS/ISO/SMS Svejst t-stykke, lang gren

DS/ISO/SMS Welded T-pcs, long branch

Cert.: EN 10204/3.1

Dim. mm	L mm	B mm	Kg/ stk/pc	AISI 304		316L	
				Varenr. Article no.	Varenr. Article no.	Varenr. Article no.	Varenr. Article no.
25,0 x 1,2	110,0	55,0	0,120	● 25026	● 25027		
38,0 x 1,2	140,0	70,0	0,220	● 25030	● 25029		
51,0 x 1,2	164,0	82,0	0,340	● 25032	● 25031		
63,5 x 1,6	210,0	105,0	0,655	● 25034	● 25033		
76,1 x 2,0	220,0	110,0	1,090	● 25036	● 25035		
101,6 x 2,0	300,0	150,0	1,950	● 25038	● 25037		



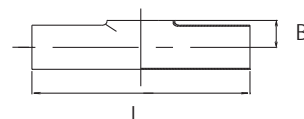
T-stykke N131

DS/ISO/SMS Svejst t-stykke, kort gren

DS/ISO/SMS Welded T-pcs., short branch

Cert.: EN 10204/3.1

Dim. mm	L mm	B mm	Kg/ stk/pc	AISI 304		316L	
				Varenr. Article no.	Varenr. Article no.	Varenr. Article no.	Varenr. Article no.
25,0 x 1,2	110,0	14,5	0,090	● 25040	● 25041		
38,0 x 1,2	140,0	21,5	0,160	● 25042	● 25043		
51,0 x 1,2	164,0	29,0	0,260	● 25044	● 25045		
63,5 x 1,6	210,0	35,0	0,490	● 25046	● 25047		
76,1 x 2,0	220,0	43,0	0,830	● 25048	● 25049		
101,6 x 2,0	300,0	56,0	1,480	● 25050	● 25051		



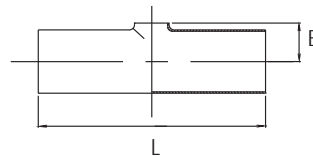
T-stykke N131

DS/ISO/SMS Svejst t-stykke reduceret kort gren

DS/ISO/SMS Welded T-pcs., reduced short branch

Cert.: EN 10204/3.1

Dim. mm	L mm	B mm	Kg/ stk/pc	AISI 316L	Varenr. Article no.
38,0 x 25,0 x 1,2	140,0	22,0	0,160	●	25052
51,0 x 25,0 x 1,2	164,0	29,0	0,260	●	25053
51,0 x 38,0 x 1,2	164,0	29,0	0,260	●	25054
63,5 x 25,0 x 1,6	210,0	35,0	0,490	●	25055
63,5 x 38,0 x 1,6	210,0	36,0	0,490	●	25056
63,5 x 51,0 x 1,6	210,0	35,0	0,830	●	25057
76,1 x 25,0 x 2,0	220,0	43,0	0,840	●	32450
76,1 x 38,0 x 2,0	220,0	43,0	0,830	●	25058
76,1 x 51,0 x 2,0	220,0	43,0	0,830	●	25059
76,1 x 63,5 x 2,0	220,0	43,0	0,830	●	25060
101,6 x 25,0 x 2,0	300,0	56,0	1,500	●	32451
101,6 x 38,0 x 2,0	300,0	56,0	1,490	●	32452
101,6 x 51,0 x 2,0	300,0	56,0	1,480	●	25061
101,6 x 63,5 x 2,0	300,0	56,0	1,480	●	25062
101,6 x 76,1 x 2,0	300,0	56,0	1,480	●	25063



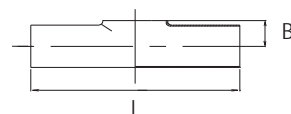
T-stykke N131

DIN Svejst t-stykke kort gren

DIN Welded T-pcs., short branch

Cert.: EN 10204/3.1

Dim. mm	DIN DN	L mm	B mm	Kg/ stk/pc	AISI 316L	Varenr. Article no.
12,0 x 1,5	10	52,0	8,0	0,020	● 32881	● 32881
13,0 x 1,5	10	52,0	8,0	0,020	● 34142	● 34142
18,0 x 1,5	15	70,0	11,5	0,044	● 32882	● 32882
19,0 x 1,5	15	70,0	11,5	0,044	● 34143	● 34143
22,0 x 1,5	20	80,0	14,5	0,059	● 32883	● 32883
23,0 x 1,5	20	80,0	14,5	0,059	● 34144	● 34144
28,0 x 1,5	25	100,0	16,0	0,080	● 32884	● 32884
29,0 x 1,5	25	100,0	16,0	0,085	● 34145	● 34145
35,0 x 1,5	32	110,0	19,5	0,090	● 34171	● 34171
40,0 x 1,5	40	120,0	22,0	0,150	● 32885	● 32885
41,0 x 1,5	40	120,0	23,0	0,120	● 34146	● 34146
52,0 x 1,5	50	140,0	29,5	0,240	● 32886	● 32886
53,0 x 1,5	50	140,0	30,0	0,150	● 34147	● 34147
70,0 x 2,0	65	160,0	40,0	0,480	● 32887	● 32887
85,0 x 2,0	80	180,0	47,5	0,628	● 32888	● 32888
104,0 x 2,0	100	200,0	58,5	0,910	● 32889	● 32889
129,0 x 2,0	125	375,0	74,0	2,168	● 32890	● 32890
154,0 x 2,0	150	450,0	90,0	3,040	● 32891	● 32891
204,0 x 2,0	200	600,0	115,0	5,950	● 32892	● 32892



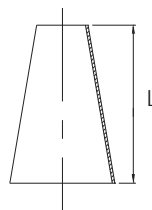
Konus N132

DS/ISO/SMS Svejst konus, koncentrisk

DS/ISO/SMS Welded concentric reducer

Cert.: EN 10204/3.1

Dim. mm	L mm	Kg/ stk/pc	AISI 316L	Varenr. Article no.
38,0 x 25,0 x 1,2	44,0	0,050	●	25069
51,0 x 25,0 x 1,2	86,0	0,100	●	25070
51,0 x 38,0 x 1,2	42,0	0,070	●	25071
63,5 x 38,0 x 1,2	82,0	0,120	●	25072
63,5 x 51,0 x 1,2	40,0	0,080	●	25073
76,1 x 38,0 x 1,2	71,0	0,200	●	33272
76,1 x 51,0 x 1,2	79,0	0,210	●	25074
76,1 x 63,5 x 1,6	39,0	0,110	●	25075
101,6 x 51,0 x 2,0	95,0	0,350	●	33271
101,6 x 63,5 x 2,0	120,0	0,400	●	27727
101,6 x 76,1 x 2,0	81,0	0,350	●	25076



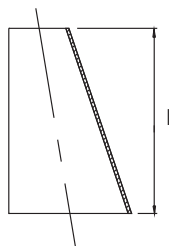
Konus N132

DS/ISO/SMS Svejst konus, excentrisk

DS/ISO/SMS Welded eccentric reducer

Cert.: EN 10204/3.1

Dim. mm	L mm	Kg/ stk/pc	AISI 316L	Varenr. Article no.
38,0 x 25,0 x 1,2	44,0	0,050	●	25077
51,0 x 25,0 x 1,2	86,0	0,100	●	25078
51,0 x 38,0 x 1,2	42,0	0,070	●	25079
63,5 x 38,0 x 1,2	82,0	0,120	●	25080
63,5 x 51,0 x 1,2	40,0	0,080	●	25081
76,1 x 38,0 x 1,2	109,0	0,200	●	33273
76,1 x 51,0 x 1,2	79,0	0,210	●	25082
76,1 x 63,5 x 1,5	39,0	0,110	●	25083
101,6 x 51,0 x 2,0	140,0	0,275	●	33274
101,6 x 63,5 x 2,0	102,0	0,300	●	33275
101,6 x 76,1 x 2,0	81,0	0,350	●	25084

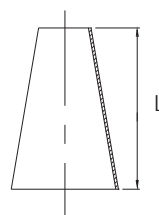


Konus N132

DIN Svejst konus, koncentrisk
DIN Welded concentric reducer

Cert.: EN 10204/3.1

Dim. mm	DIN DN	L mm	Kg/ stk/pc	AISI 316L	Varenr. Article no.
19,0 x 13,0 x 1,5	15/10	11,0	0,015	●	34148
23,0 x 19,0 x 1,5	20/15	7,0	0,015	●	34149
28,0 x 12,0 x 1,5	25/10	30,4	0,024	●	32913
29,0 x 13,0 x 1,5	25/10	28,0	0,025	●	34150
29,0 x 23,0 x 1,5	25/20	11,0	0,020	●	34151
34,0 x 28,0 x 1,5	32/25	11,2	0,020	●	32914
40,0 x 28,0 x 1,5	40/25	22,4	0,030	●	32915
41,0 x 29,0 x 1,5	40/25	22,0	0,033	●	34152
41,0 x 35,0 x 1,5	40/32	11,0	0,030	●	34172
52,0 x 40,0 x 1,5	50/40	22,6	0,050	●	32919
53,0 x 41,0 x 1,5	50/40	22,0	0,054	●	34153
70,0 x 52,0 x 2,0	65/50	31,9	0,090	●	32921
70,0 x 53,0 x 2,0	65/50	29,0	0,095	●	34154
85,0 x 52,0 x 2,0	80/50	60,4	0,110	●	32923
85,0 x 53,0 x 2,0	80/50	56,0	0,115	●	34155
104,0 x 70,0 x 2,0	100/65	63,4	0,230	●	32926
104,0 x 85,0 x 2,0	100/80	35,5	0,160	●	32927
129,0 x 104,0 x 2,0	125/100	46,7	0,254	●	32928
154,0 x 129,0 x 2,0	150/125	46,7	0,316	●	32960
204,0 x 154,0 x 2,0	200/150	90,0	1,650	●	32156

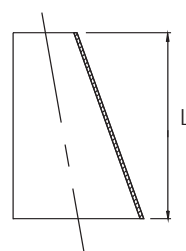


Konus N132

DIN Svejst konus, excentrisk
DIN Welded eccentric reducer

Cert.: EN 10204/3.1

Dim. mm	DIN DN	L mm	Kg/ stk/pc	AISI 316L	Varenr. Article no.
19,0 x 13,0 x 1,5	15/10	16,5	0,030	●	34157
23,0 x 19,0 x 1,5	20/15	11,0	0,016	●	34158
29,0 x 13,0 x 1,5	25/10	44,0	0,045	●	34159
29,0 x 23,0 x 1,5	25/20	16,5	0,030	●	34160
34,0 x 28,0 x 1,5	32/25	19,0	0,040	▶	32929
35,0 x 23,0 x 1,5	32/20	33,0	0,045	●	34173
35,0 x 29,0 x 1,5	32/25	16,5	0,035	●	34174
40,0 x 28,0 x 1,5	40/25	34,7	0,050	▶	32930
40,0 x 34,0 x 1,5	40/32	18,8	0,060	▶	32931
41,0 x 29,0 x 1,5	40/25	33,0	0,054	●	34161
41,0 x 35,0 x 1,5	40/32	16,5	0,050	●	34175
52,0 x 28,0 x 1,5	50/25	65,9	0,080	▶	32932
52,0 x 34,0 x 1,5	50/32	49,5	0,110	▶	32933
52,0 x 40,0 x 1,5	50/40	33,0	0,070	▶	32934
53,0 x 41,0 x 1,5	50/40	33,0	0,075	●	34162
70,0 x 40,0 x 2,0	65/40	81,8	0,170	▶	32935
70,0 x 52,0 x 2,0	65/50	49,1	0,110	▶	32936
70,0 x 53,0 x 2,0	65/50	44,0	0,115	●	34163
85,0 x 40,0 x 2,0	80/40	120,9	0,250	▶	32937
85,0 x 52,0 x 2,0	80/50	95,5	0,210	▶	32938
85,0 x 53,0 x 2,0	80/50	85,0	0,215	●	34164
85,0 x 70,0 x 2,0	80/65	41,2	0,140	▶	32939
104,0 x 70,0 x 2,0	100/65	94,8	0,216	▶	32940
104,0 x 85,0 x 2,0	100/80	49,4	0,154	▶	32941
104,0 x 85,0 x 2,0	100/80	52,5	0,160	●	34165
129,0 x 104,0 x 2,0	125/100	68,5	0,430	●	34166
154,0 x 129,0 x 2,0	150/125	68,5	0,500	●	34167
204,0 x 154,0 x 2,0	200/150	135,5	1,650	●	34168

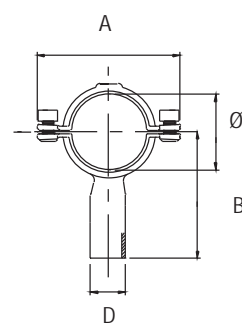


Rørholder N134

Rørholder med skaft, med unbrako skrue, bred model, DS/SMS

Pipe support with shaft, hexagon socket cap screw, wide type, DS/SMS

Dim. mm	B mm	A mm	Ø mm	D mm	Kg/ stk/pc	AISI 304
Varenr. Article no.						
25,0	90,0	80,0	27,0	21,3	0,260	● 32942
38,0	90,0	93,0	40,0	21,3	0,280	● 32943
51,0	90,0	103,0	53,0	21,3	0,300	● 32944
63,5	90,0	118,0	65,5	21,3	0,320	● 32945
76,1	90,0	132,0	78,0	21,3	0,340	● 32946
101,6	90,0	157,0	104,0	21,3	0,380	● 32947
25,0	150,0	80,0	27,0	21,3	0,260	● 32948
38,0	150,0	93,0	40,0	21,3	0,300	● 32949
51,0	150,0	106,0	53,0	21,3	0,300	● 32950
63,5	150,0	118,0	65,5	21,3	0,320	● 32951
76,1	150,0	132,0	78,0	21,3	0,340	● 32952
101,6	150,0	157,0	104,0	21,3	0,380	● 32953

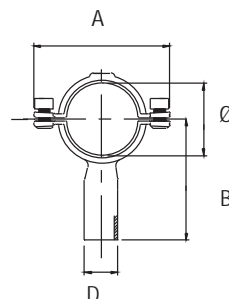


Rørholder N114

Rørholder med svejseskaft og unbrako skrue, DIN

Pipe support with shaft, hexagon socket cap screw, DIN

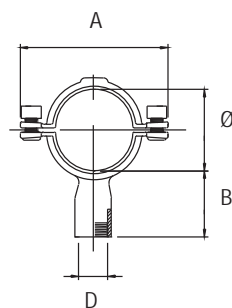
Dim. mm	B mm	A mm	Ø mm	D mm	Kg/ stk/pc	AISI 304
Varenr. Article no.						
18 - 21,0	90,0	72,0	21,0	21,3	0,209	● 20329
25 - 26,0	90,0	80,0	26,0	21,3	0,224	● 20330
29 - 31,0	90,0	80,0	31,0	21,3	0,225	● 20331
36 - 38,0	90,0	91,0	38,0	21,3	0,242	● 20332
45 - 46,0	90,0	99,0	46,0	21,3	0,256	● 20333
54 - 56,0	90,0	107,0	56,0	21,3	0,271	● 20334
70 - 71,0	90,0	123,0	71,0	21,3	0,298	● 20335
75 - 76,0	90,0	129,0	76,0	21,3	0,307	● 20336
84 - 86,0	90,0	137,0	86,0	21,3	0,323	● 20337
104 - 106,0	102,0	157,0	106,0	21,3	0,368	● 20338
129 - 131,0	105,0	182,0	131,0	21,3	0,420	● 20339
154 - 156,0	128,0	207,0	156,0	21,3	0,479	● 20340
204 - 206,0	152,0	257,0	206,0	21,3	0,533	● 20341



Rørholder N134

Rørholder med skaft, med unbrako skrue, bred model, rør ende med 1/2" muffe,
 Pipe support with shaft, hexagon socket cap screw wide type, tube end with 1/2" socket

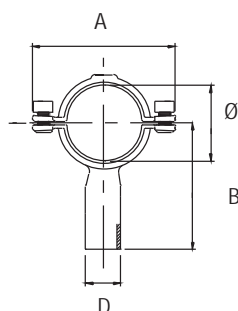
Dim. mm	B mm	A mm	Ø mm	D mm	Kg/ stk/pc	AISI 304 Varenr. Article no.
25,0	45,0	80,0	27,0	23,1	0,170	● 32954
38,0	45,0	93,0	40,0	23,1	0,190	● 32955
51,0	45,0	106,0	53,0	23,1	0,220	● 32956
63,5	45,0	118,0	65,5	23,1	0,270	● 32957
76,1	45,0	132,0	78,0	23,1	0,300	● 32958
101,6	45,0	157,0	104,0	23,1	0,350	● 32959



Rørholder N134

Rørholder med skaft, med indlæg og møtrik
 Pipe clips with welded shaft

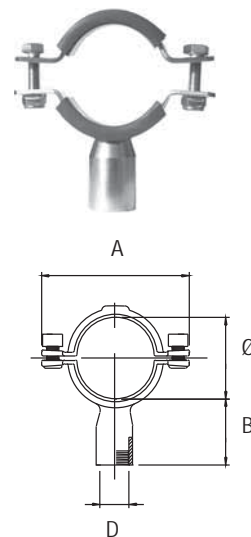
Dim. mm	B mm	A mm	Ø mm	D mm	Kg/ stk/pc	AISI 304 Varenr. Article no.
25,0	90,0	80,0	27,0	20,0	0,260	● 25085
38,0	90,0	93,0	40,0	20,0	0,280	● 25086
51,0	90,0	103,0	53,0	20,0	0,300	● 25087
63,5	90,0	118,0	65,5	20,0	0,320	● 25088
76,1	90,0	132,0	78,0	20,0	0,340	● 25089
101,6	90,0	157,0	104,0	20,0	0,380	● 25090
25,0	150,0	80,0	27,0	20,0	0,260	● 25091
38,0	150,0	93,0	40,0	20,0	0,300	● 25092
51,0	150,0	106,0	53,0	20,0	0,300	● 25093
63,5	150,0	118,0	65,5	20,0	0,320	● 25094
76,1	150,0	132,0	78,0	20,0	0,340	● 25095
101,6	150,0	157,0	104,0	20,0	0,380	● 25096



Rørholder N134

Rørholder med skaft, med indlæg og møtrik, rør ende med 1/2" muffe,
Pipe clips tube end with 1/2" socket

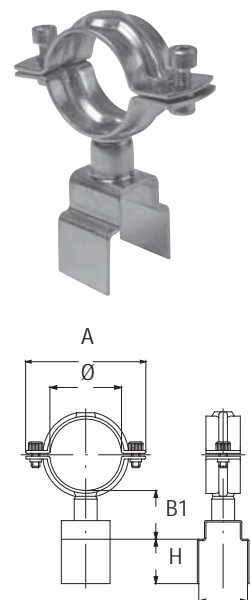
Dim. mm	B mm	A mm	Ø mm	D mm	Kg/ stk/pc	AISI 304
						Varenr. Article no.
25,0	45,0	80,0	27,0	28,0	0,170	● 25097
38,0	45,0	93,0	40,0	28,0	0,190	● 25098
51,0	45,0	106,0	53,0	28,0	0,220	● 25099
63,5	45,0	118,0	65,5	28,0	0,270	● 25100
76,1	45,0	132,0	78,0	28,0	0,300	● 25101
101,6	45,0	157,0	104,0	28,0	0,350	● 25102



Rørholder N134

Rørholder til 40 x 60 mm rør,
Pipe clips for 40 x 60 mm pipe

Dim. mm	B1 mm	H mm	A mm	Ø mm	Kg/ stk/pc	AISI 304
						Varenr. Article no.
25,0	50,0	30,0	78,0	27,0	0,24	● 25103
38,0	50,0	30,0	91,0	40,0	0,26	● 25104
51,0	50,0	30,0	104,0	53,0	0,29	● 25105
63,5	50,0	30,0	116,0	65,5	0,32	● 25106



DS/ISO Svejsunion
DS/ISO Welded union



Dim. mm	Tomme Inch	Omløber Nut	Svejskrave Welding liner	Svejsenippel Welding male part	Pakning Seal		Blindskeive Blanks		Bund m/Kæde End cap w/ chain	
		Varenr. Article no.	Varenr. Article no.	Varenr. Article no.	Varenr. Article no.	NBR	Viton	Varenr. Article no.	Varenr. Article no.	Varenr. Article no.
25,0	1"	● 18355	● 18375	● 18365	● 18345	● 32551	● 32583	● 18406	● 32991	● 32999
38,0	1 ½"	● 18356	● 18376	● 18366	● 18346	● 32552	● 32584	● 18407	● 32992	● 33000
51,0	2"	● 18357	● 18377	● 18367	● 18347	● 32553	● 32585	● 18408	● 32993	● 33001
63,5	2 ½"	● 18358	● 18378	● 18368	● 18348	● 32554	● 32586	● 18409	● 32994	● 33002
76,1	3"	● 18359	● 18379	● 18369	● 18349	● 32555	● 32587	● 18410	● 32995	● 33003
101,6	4"	● 18360	● 18380	● 18370	● 18350	● 32556	● 32588	● 18411		

Komplet union / Complete union: x x x (x) (x) (x)

DS/ISO Valseunion
DS/ISO Expanding union



Dim. mm	Tomme Inch	Omløber Nut	Valsekravestuds Expanding liner	Valsenippel Expanding male part	Pakning Seal		
		Varenr. Article no.	Varenr. Article no.	Varenr. Article no.	NBR	Viton	
25,0	1"	● 18355	● 18412	● 18418	● 18345	● 32551	● 32583
38,0	1 ½"	● 18356	● 18413	● 18419	● 18346	● 32552	● 32584
51,0	2"	● 18357	● 18414	● 18420	● 18347	● 32553	● 32585
63,5	2 ½"	● 18358	● 18415	● 18421	● 18348	● 32554	● 32586
76,1	3"	● 18359	● 18416	● 18422	● 18349	● 32555	● 32587
101,6	4"	● 18360	● 18417	● 18423	● 18350	● 32556	● 32588

Komplet union / Complete union: x x x (x) (x) (x)

SMS Svejsunion
SMS Welded union



Dim. mm	Tomme Inch.	Omløber Nut	Svejskrave Welding liner		Svejsenippel Welding male part	Pakning Seal		Blindskeive Blanks	
		Varenr. Articleno	Varenr. Articleno	Varenr. Articleno	Varenr. Articleno	NBR	Viton	Varenr. Articleno	Varenr. Articleno
25,0	1"	● 27410	● 27395	● 27385	● 27401	● 27420	● 27500	● 32284	● 27450
38,0	1 ½"	● 27411	● 27396	● 27386	● 27402	● 27421	● 27501	● 32285	● 27451
51,0	2"	● 27412	● 27397	● 27387	● 27403	● 27422	● 27502	● 32286	● 27452
63,5	2 ½"	● 27413	● 27398	● 27388	● 27404	● 27423	● 27503	● 32287	● 27453
76,1	3"	● 27414	● 27399	● 27389	● 27405	● 27424	● 27504	● 32288	● 27454
101,6	4"	● 27415	● 27400		● 27406	● 27425	● 27505	● 32289	● 27455

Komplet union / Complete union: x (x) (x) x (x) (x) (x)

Se følgende sider for tegninger og mål / Please see the following pages for drawings and measures

DIN Svejseunion
DIN Welded union



Dim. mm	DN	Omløber Nut	Svejsekrave Welding liner	Svejsenippel Welding male part	NBR	Pakning Seal EPDM	Viton	Blindskive Blanks
		Varenr. Article no.	Varenr. Article no.	Varenr. Article no.	Varenr. Article no.	Varenr. Article no.	Varenr. Article no.	Varenr. Article no.
29,0	25	● 33302	● 33296	● 33290	● 33308	● 33314	● 33320	● 33681
41,0	40	● 33303	● 33297	● 33291	● 33309	● 33315	● 33321	● 33682
53,0	50	● 33304	● 33298	● 33292	● 33310	● 33316	● 33322	● 33683
70,0	65	● 33305	● 33299	● 33293	● 33311	● 33317	● 33323	● 33684
85,0	80	● 33306	● 33300	● 33294	● 33312	● 33318	● 33324	● 33685
104,0	100	● 33307	● 33301	● 33295	● 33313	● 33319	● 33325	● 33686
Komplet union / Complete union:		x	x	x	(x)	(x)	(x)	

Se følgende sider for tegninger og mål / Please see the following pages for drawings and measures

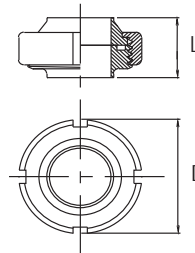
Svejseunion N133

DS Svejseunion, komplet

DS Welding union, complete

Cert.: EN 10204/3.1

Dim. mm	L mm	D mm	Kg/ stk/pc	AISI 316	Varenr. Article no.
25,0	36,0	57,0	0,352	●	25115
38,0	37,0	71,0	0,503	●	25116
51,0	37,0	86,0	0,724	●	25117
63,5	45,0	103,0	1,089	●	25118
76,1	45,0	115,0	1,376	●	25119
101,6	47,0	150,0	1,975	●	25534



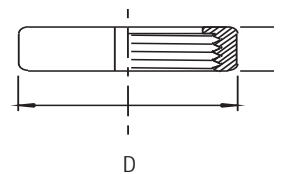
Omløber N133

DS Uniondele, omløber

DS Union parts, nut

Cert.: EN 10204/3.1

Dim. mm	L mm	D mm	Kg/ stk/pc	AISI 304	Varenr. Article no.
25,0	20,0	57,0	0,170	●	18355
38,0	20,0	71,0	0,220	●	18356
51,0	22,0	86,0	0,320	●	18357
63,5	24,0	103,0	0,460	●	18358
76,1	25,0	115,0	0,510	●	18359
101,6	28,0	150,0	1,100	●	18360



Endebund N133

DS/ISO Endebund og kæde

DS/ISO End cap and chain

Dim. mm	Kg/ stk/pc	Endebund/End cap AISI 304	Kæde/chain AISI 304
		Varenr. Article no.	Varenr. Article no.
25,0	0,200	● 32991	● 32999
38,0	0,300	● 32992	● 33000
51,0	0,450	● 32993	● 33001
63,5	0,634	● 32994	● 33002
76,1	0,900	● 32995	● 33003

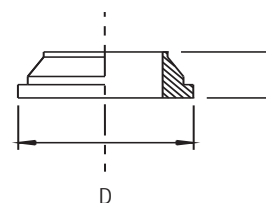


Svejskrave N133

DS Uniondele, svejskrave
DS Union parts, welding liner

Cert.: EN 10204/3.1

Dim. mm	L mm	D mm	Kg/ stk/pc	AISI 316	Varenr. Article no.
25,0	11,0	40,0	0,056		● 18375
38,0	11,0	54,0	0,085		● 18376
51,0	11,0	68,0	0,120		● 18377
63,5	12,0	84,0	0,200		● 18378
76,1	12,0	96,0	0,250		● 18379
101,6	12,0	124,0	0,510		● 18380

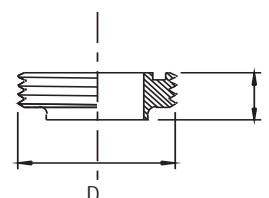


Svejsenippel N133

DS Uniondele, svejsenippel
DS Union parts, welding male part

Cert.: EN 10204/3.1

Dim. mm	L mm	D mm	Kg/ stk/pc	AISI 316	Varenr. Article no.
25,0	18,5	44,0	0,095		● 18365
38,0	20,0	58,0	0,140		● 18366
51,0	20,0	72,0	0,210		● 18367
63,5	24,0	88,0	0,350		● 18368
76,1	24,0	100,0	0,430		● 18369
101,6	24,0	130,0	0,780		● 18370

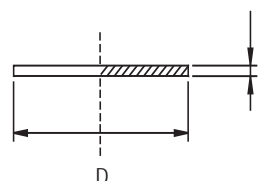


Blindskive N133

DS Uniondele, blindskive
DS Union parts, blanks

Cert.: EN 10204/3.1

Dim. mm	L mm	D mm	Kg/ stk/pc	AISI 304	Varenr. Article no.
25,0	3,0	40,0	0,030		● 18406
38,0	3,0	54,0	0,052		● 18407
51,0	3,0	68,0	0,084		● 18408
63,5	4,0	84,0	0,104		● 18409
76,1	4,0	96,0	0,230		● 18410
101,6	4,0	124,0	0,376		● 18411



Pakning N133

DS Uniondele, pakning

DS Union parts, seal

Dim. mm	Kg/ stk/pc	NBR	EPDM	Viton
		Varenr. Article no.	Varenr. Article no.	Varenr. Article no.
25,0	0,003	● 18345	● 32551	● 32583
38,0	0,004	● 18346	● 32552	● 32584
51,0	0,005	● 18347	● 32553	● 32585
63,5	0,008	● 18348	● 32554	● 32586
76,1	0,011	● 18349	● 32555	● 32587
101,6	0,013	● 18350	● 32556	● 32588



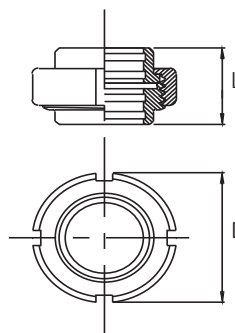
Valseunion N133

DS Valseunion, komplet

DS Expanding union, complete

Cert.: EN 10204/3.1

Dim. mm	L mm	D mm	Kg/ stk/pc	AISI 304
				Varenr. Article no.
25,0	36,5	57,0	0,352	● 25120
38,0	40,5	71,0	0,503	● 25121
51,0	44,5	86,0	0,724	● 25122
63,5	48,5	103,0	1,089	● 25123
76,1	52,5	115,0	1,376	● 25124



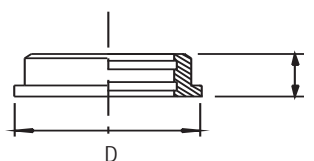
Valsekravestuds N133

DS Uniondele, valsekravestuds

DS Union parts, expanding liner

Cert.: EN 10204/3.1

Dim. mm	L mm	D mm	Kg/ stk/pc	AISI 304
				Varenr. Article no.
25,0	16,0	40,0	0,056	● 18412
38,0	18,0	54,0	0,090	● 18413
51,0	20,0	68,0	0,148	● 18414
63,5	22,0	84,0	0,232	● 18415
76,1	24,0	96,0	0,284	● 18416
101,6	29,0	123,0	0,530	● 18417



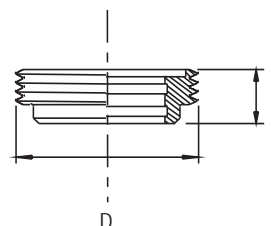
Valsenippel N133

DS Uniondele, valsenippel

DS Union parts, expanding male part

Cert.: EN 10204/3.1

Dim. mm	L mm	D mm	Kg/ stk/pc	AISI 304	Varenr. Article no.
25,0	20,0	44,0	0,100		● 18418
38,0	22,0	58,0	0,156		● 18419
51,0	24,0	72,0	0,240		● 18420
63,5	26,0	88,0	0,364		● 18421
76,1	28,0	100,0	0,438		● 18422
101,6	34,0	130,0	0,810		● 18423



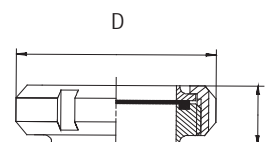
Svejseunion N135

SMS Svejseunion, komplet

SMS Welding union, complete

Cert.: EN 10204/3.1

Dim. mm	L mm	D mm	Kg/ stk/pc	AISI 304 AISI 316L	Varenr. Article no.
25,0	23,5	51,0	0,229		● 813000
38,0	30,0	74,0	0,601		● 813000
51,0	30,0	84,0	0,674		● 813000
63,5	33,0	100,0	1,087		● 813000
76,1	35,0	114,0	1,387		● 813000
101,6	48,0	154,0	3,873		● 813000



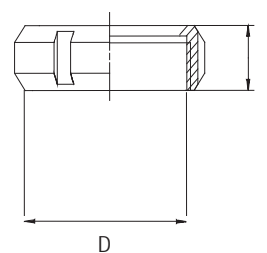
Omløber N135

SMS Uniondele, omløber

SMS Union parts, nut

Cert.: EN 10204/3.1

Dim. mm	L mm	D mm	Kg/ stk/pc	AISI 304	Varenr. Article no.
25,0	20,0	51,0	0,115		● 27410
38,0	25,0	74,0	0,257		● 27411
51,0	26,0	84,0	0,280		● 27412
63,5	30,0	100,0	0,430		● 27413
76,1	32,0	114,0	0,585		● 27414
101,6	45,0	154,0	1,650		● 27415



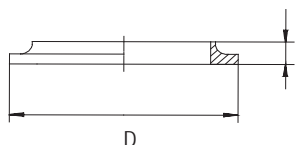
Svejskrave N135

SMS Uniondele, svejskrave, kort

SMS Union parts, welding liner, short

Cert.: EN 10204/3.1

Dim. mm	L mm	D mm	Kg/ stk/pc	AISI 316	Varenr. Article no.
25,0	7,5	35,5	0,030		● 27395
38,0	9,0	55,0	0,040		● 27396
51,0	9,0	65,0	0,060		● 27397
63,5	9,0	80,0	0,100		● 27398
76,1	10,0	93,0	0,130		● 27399
101,6	12,0	127,0	0,280		● 27400



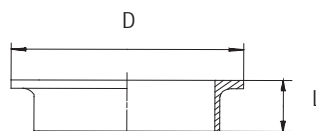
Svejskrave N135

SMS Uniondele, svejskrave, lang

SMS Union parts, welding liner, long

Cert.: EN 10204/3.1

Dim. mm	L mm	D mm	Kg/ stk/pc	AISI 316	Varenr. Article no.
25,0	17,0	35,5	0,031		● 27385
38,0	20,0	55,0	0,076		● 27386
51,0	20,0	65,0	0,086		● 27387
63,5	25,0	80,0	0,153		● 27388
76,1	30,0	93,0	0,220		● 27389



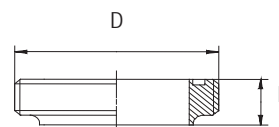
Svejsenippel N135

SMS Uniondele, svejsenippel

SMS Union parts, welding male part

Cert.: EN 10204/3.1

Dim. mm	L mm	D mm	Kg/ stk/pc	AISI 316	Varenr. Article no.
25,0	18,5	40,0	0,060		● 27401
38,0	20,0	60,0	0,160		● 27402
51,0	20,0	70,0	0,180		● 27403
63,5	24,0	85,0	0,340		● 27404
76,1	24,0	98,0	0,450		● 27405
101,6	35,0	132,0	1,320		● 27406



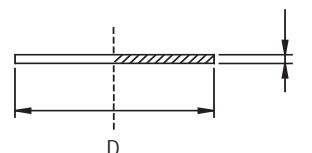
Blindskeive N135

SMS Uniondele, blindskeive

SMS Union parts, blanks

Cert.: EN 10204/3.1

Dim. mm	L mm	D mm	Kg/ stk/pc	AISI 316	Varenr. Article no.
25,0	3,0	35,5	0,024		● 27450
38,0	4,0	55,0	0,074		● 27451
51,0	4,0	65,0	0,104		● 27452
63,5	4,0	80,0	0,158		● 27453
76,1	5,0	93,0	0,266		● 27454
101,6	6,0	127,0	0,594		● 27455



Pakning N135

SMS Uniondele, pakning

SMS Union parts, seal

Dim. mm	Kg/ stk/pc	NBR	EPDM	Viton
		Varenr. Article no.	Varenr. Article no.	Varenr. Article no.
25,0	0,003	● 27420	● 27500	● 32284
38,0	0,004	● 27421	● 27501	● 32285
51,0	0,005	● 27422	● 27502	● 32286
63,5	0,008	● 27423	● 27503	● 32287
76,1	0,011	● 27424	● 27504	● 32288
101,6	0,013	● 27425	● 27505	● 32289



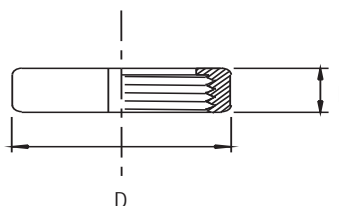
Omløber N133

DIN Uniondele, omløber

DIN Union parts, nut

Cert.: EN 10204/3.1

Dim. mm	DN	L mm	D mm	Kg/ stk/pc	AISI 304	Varenr. Article no.
29,0	25	21,0	52,0	0,178		● 33302
41,0	40	21,0	65,0	0,245		● 33303
53,0	50	21,0	78,0	0,245		● 33304
70,0	65	25,0	95,0	0,560		● 33305
85,0	80	29,0	110,0	0,746		● 33306
104,0	100	31,0	130,0	1,008		● 33307

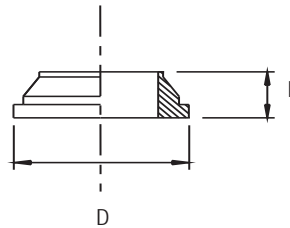


Svejskrave N133

DIN Uniondele, svejskrave
DIN Union parts, welding liner

Cert.: EN 10204/3.1

Dim. mm	DN	L mm	D mm	Kg/ stk/pc	AISI 316	Varenr. Article no.
29,0	25	22,0	44,0	0,089		● 33296
41,0	40	26,0	56,0	0,134		● 33297
53,0	50	28,0	68,5	0,198		● 33298
70,0	65	32,0	86,0	0,313		● 33299
85,0	80	37,0	100,0	0,394		● 33300
104,0	100	44,0	121,0	0,602		● 33301

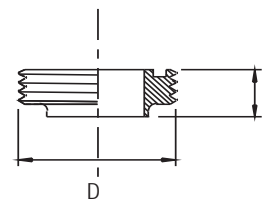


Svejsenippel N133

DIN Uniondele, svejsenippel
DIN Union parts, welding male part

Cert.: EN 10204/3.1

Dim. mm	DN	L mm	D mm	Kg/ stk/pc	AISI 316	Varenr. Article no.
29,0	25	29,0	52,0	0,108		● 33290
41,0	40	33,0	65,0	0,173		● 33291
53,0	50	35,0	78,0	0,230		● 33292
70,0	65	40,0	95,0	0,336		● 33293
85,0	80	45,0	110,0	0,524		● 33294
104,0	100	54,0	130,0	0,718		● 33295



Pakning N133

DIN Uniondele, pakning
DIN Union parts, seal

Dim. mm	DN	Kg/ stk/pc	NBR	EPDM	Viton
			Varenr. Article no.	Varenr. Article no.	Varenr. Article no.
29,0	25	0,005	● 33308	● 33314	● 33320
41,0	40	0,005	● 33309	● 33315	● 33321
53,0	50	0,006	● 33310	● 33316	● 33322
70,0	65	0,007	● 33311	● 33317	● 33323
85,0	80	0,009	● 33312	● 33318	● 33324
104,0	100	0,010	● 33313	● 33319	● 33325



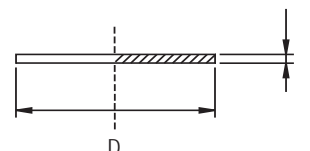
Blindskiye N133

DIN Uniondele, blindskiye

DIN Union parts, blanks

Cert.: EN 10204/3.1

Dim. mm	L mm	D mm	Kg/ stk/pc	AISI316	Varenr. Article no.
29,0	22,0	44,0	0,089		● 33681
41,0	26,0	56,0	0,134		● 33682
53,0	28,0	68,5	0,198		● 33683
70,0	32,0	86,0	0,313		● 33684
85,0	37,0	100,0	0,394		● 33685
104,0	44,0	121,0	0,602		● 33686



Clampoversigt Clamp survey

DS/ISO Clamp DS/ISO Clamp



Dim. mm	Tomme Inch	Spændering Clamp lock washer Kraftiv V-type/heavy duty		Krave Clamp ferrule	Pakning Seal EPDM		Viton		Blindskeive Clamp blank
		Varenr. Article no.	Varenr. Article no.	Varenr. Article no.	Varenr. Article no.	Varenr. Article no.	Varenr. Article no.	Varenr. Article no.	Varenr. Article no.
25,0	1"	● 18315	● 32625	● 18325	● 18335	● 32557	● 32577	● 18400	
38,0	1 ½"	● 18316	● 32627	● 18326	● 18336	● 32558	● 32578	● 18401	
51,0	2"	● 18317	● 32629	● 18327	● 18337	● 32559	● 32579	● 18402	
63,5	2 ½"	● 18318	● 32631	● 18328	● 18338	● 32560	● 32580	● 18403	
76,1	3"	● 18319	● 32633	● 18329	● 18339	● 32561	● 32581	● 18404	
101,6	4"	● 18320	● 32635	● 18330	● 18340	● 32562	● 32582	● 18405	
168,3			● 32766						
Komplet clamp / Complete clamp:		x	(x)	x (2 stk/pc)	(x)	(x)	(x)		

DIN Clamp DIN Clamp



Dim. mm	DN	Spændering Clamp lock washer	Krave Clamp ferrule	Pakning Seal		Blindskeive Clamp blank		
				NBR	EPDM	Viton	Teflon	Varenr. Article no.
		Varenr. Article no.	Varenr. Article no.	Varenr. Article no.	Varenr. Article no.	Varenr. Article no.	Varenr. Article no.	Varenr. Article no.
13,0	10	● 32622	● 32642	● 32670	● 32684	▶ 32698	● 32712	▶ 32656
19,0	15	▶ 32623	● 32643	● 32671	● 32685	● 32699	▶ 32713	▶ 32657
23,0	20	▶ 32624	● 32644	▶ 32672	● 32686	● 32670	▶ 32714	● 32658
29,0	25	● 32626	● 32645	● 32673	● 32687	● 32701	● 32715	● 32659
41,0	40	● 32628	● 32646	● 32674	● 32688	● 32702	● 32716	● 32660
53,0	50	● 32630	● 32647	● 32675	● 32689	● 32703	● 32717	● 32661
70,0	65	● 32632	● 32648	● 32676	● 32690	● 32704	● 32718	● 32662
85,0	80	● 32634	● 32649	● 32677	● 32691	● 32705	● 32719	● 32663
104,0	100	● 32636	● 32650	● 32678	● 32692	● 32706	● 32720	● 32664
129,0	125	● 32637	● 32651	● 32679	● 32693	● 32707	● 32721	● 32665
154,0	150	● 32638	● 32652	● 32680	● 32694	● 32708	● 32722	● 32666
204,0	200	● 32639	● 32653	▶ 32681	● 32695	▶ 32709	▶ 32723	● 32667
254,0	250	▶ 32640	▶ 32654	▶ 32682	● 32696	▶ 32710	▶ 32724	▶ 32668
304,0	300	▶ 32641	● 32655	▶ 32683	● 32697	▶ 32711	▶ 32725	● 32669
Komplet clamp / Complete clamp:		x	x (2 stk/pc)	(x)	(x)	(x)	(x)	

Se følgende sider for tegninger og mål / Please see the following pages for drawings and measures

DIN Miniclamp
DIN Miniclamp



Dim. mm	Spændering Clamp lock washer	Krave Clamp ferrule	EPDM	Pakning Seal Viton	Teflon	Blindskive Clamp blank
	Varenr. Article no.	Varenr. Article no.	Varenr. Article no.	Varenr. Article no.	Varenr. Article no.	Varenr. Article no.
6,0	● 32726	● 32727	● 32736	▶ 32744	● 32751	▶ 32735
8,0	● 32726	● 32728	● 32737	▶ 32745	● 32752	▶ 32735
10,0	● 32726	● 32729	● 32738	▶ 32746	● 32753	▶ 32735
12,0	● 32726	● 32730	● 32739	● 32747	● 32754	▶ 32735
14,0	● 32726	● 32731	● 32740	▶ 32748	▶ 32755	▶ 32735
16,0	● 32726	● 32732	● 32741	● 32749	▶ 32756	▶ 32735
18,0	● 32726	● 32733	● 32742	● 32750	● 32757	▶ 32735
19,0	● 32726	● 32734	● 32743		▶ 32758	▶ 32735
Komplet miniclamp / Complete miniclamp: x x (2 stk/pc) (x) (x) (x)						

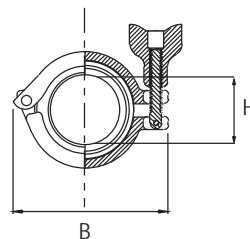
Se følgende sider for tegninger og mål / Please see the following pages for drawings and measures

Clampspændering N136

DS/ISO/SMS Clampspændring med fingermøtrik
DS/ISO/SMS Clamp lock washer with milled nut

Cert.: EN 10204/3.1

Dim. mm	B mm	H mm	Kg/ stk/pc	AISI 304	Varenr. Article no.
25,0	88,9	63,5	0,296	●	18315
38,0	88,9	63,5	0,296	●	18316
51,0	101,6	76,2	0,352	●	18317
63,5	114,3	88,9	0,390	●	18318
76,1	127,0	101,6	0,432	●	18319
101,6	160,0	132,0	0,554	●	18320

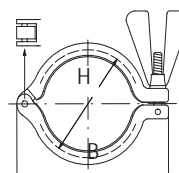


Clampspændering N136

DS/ISO/SMS Clampspændring, med fingermøtrik, kraftig model, V-Type,
DS/ISO/SMS Clamp lock washer with milled nut, heavy duty, V-hedged

Cert.: EN 10204/3.1

Dim. mm	ISO mm	B mm	H mm	Kg/ stk/pc	AISI 304	Varenr. Article no.
25,0	25,0	85,0	50,0	0,211	●	32625
38,0	38,0	85,0	50,0	0,211	●	32627
51,0	51,0	99,0	64,0	0,303	●	32629
63,5	63,5	112,0	77,0	0,342	●	32631
76,1	76,1	126,0	91,0	0,396	●	32633
101,6	101,6	154,0	119,0	0,534	●	32635
168,3	168,3	255,0	187,0	1,590	●	32766

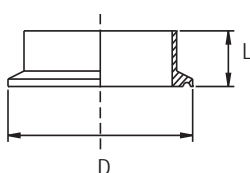


Clampkrave N136

DS/ISO/SMS Clampkrave
DS/ISO/SMS Clamp ferrule

Cert.: EN 10204/3.1

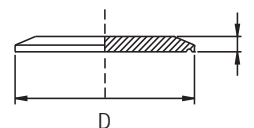
Udv./Outside dim. mm	Indv./Inside dim mm	L mm	D mm	Kg/ stk/pc	AISI 316L	Varenr. Article no.
25,0	22,6	21,5	50,5	0,068	●	18325
38,0	35,6	21,5	50,5	0,068	●	18326
51,0	48,6	21,5	64,0	0,052	●	18327
63,5	60,3	21,5	77,5	0,070	●	18328
76,1	72,9	21,5	91,0	0,106	●	18329
101,6	97,6	21,5	119,0	0,128	●	18330



Clampblindske N136
DS/ISO/SMS Clampblindske
DS/ISO/SMS Clamp blank

Cert.: EN 10204/3.1

Dim. mm	L mm	D mm	Kg/ stk/pc	AISI 316L	Varenr. Article no.
25,0	6,4	50,4	0,078		● 18400
38,0	6,4	50,4	0,078		● 18401
51,0	6,4	63,9	0,134		● 18402
63,5	6,4	77,4	0,200		● 18403
76,1	6,4	90,9	0,288		● 18404
101,6	6,4	118,9	0,510		● 18405



Clamppakning N136
DS/ISO/SMS Clamppakning
DS/ISO/SMS Clamp seal

Dim. mm	Kg/ stk/pc	NBR	EPDM	Viton
		Varenr. Article no.	Varenr. Article no.	Varenr. Article no.
25,0	0,008	● 18335	● 32557	● 32577
38,0	0,008	● 18336	● 32558	● 32578
51,0	0,008	● 18337	● 32559	● 32579
63,5	0,008	● 18338	● 32560	● 32580
76,1	0,012	● 18339	● 32561	● 32581
101,6	0,016	● 18340	● 32562	● 32582



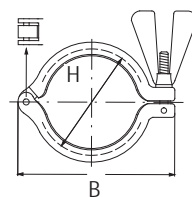
Clampspændering N138

DIN Clampspændring med fingermøtrik, kraftig model, V-Type

DIN Clamp lock washer with milled nut, heavy duty, V-hedged

Cert.: EN 10204/3.1

Dim. mm	DIN DN	B mm	H mm	AISI 304	Varenr. Article no.
13,0	10	69,0	34,0	●	32622
19,0	15	69,0	34,0	●	32623
23,0	20	69,0	34,0	●	32624
29,0	25	85,0	50,0	●	32626
41,0	40	85,0	50,0	●	32628
53,0	50	99,0	64,0	●	32630
70,0	65	126,0	91,0	●	32632
85,0	80	140,0	106,0	●	32634
104,0	100	154,0	119,0	●	32636
129,0	125	194,0	147,0	●	32637
154,0	150	230,0	170,0	●	32638
204,0	200	289,0	221,0	●	32639
254,0	250	357,0	268,0	●	32640
304,0	300	430,0	319,0	●	32641



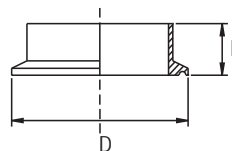
Clampkrave N138

DIN Clampkrave

DIN Clamp ferrule

Cert.: EN 10204/3.1

Dim. mm	DIN DN	L mm	D mm	AISI 316L	Varenr. Article no.
13,0	10	18,0	34,0	●	32642
19,0	15	18,0	34,0	●	32643
23,0	20	18,0	34,0	●	32644
29,0	25	21,5	50,5	●	32645
41,0	40	21,5	50,5	●	32646
53,0	50	21,5	64,0	●	32647
70,0	65	28,0	91,0	●	32648
85,0	80	28,0	106,0	●	32649
104,0	100	28,0	119,0	●	32650
129,0	125	28,0	144,0	●	32651
154,0	150	28,0	167,0	●	32652
204,0	200	28,0	218,0	●	32653
254,0	250	28,0	268,0	●	32654
304,0	300	28,0	319,0	●	32655



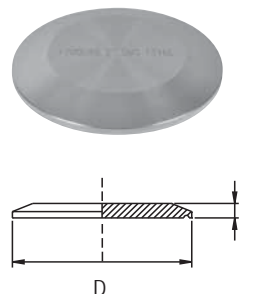
Clampblindske N138

DIN Clampblindske

DIN Clamp blank

Cert.: EN 10204/3.1

Dim. mm	DIN DN	L mm	D mm	AISI 316L	Varenr. Article no.
13,0	10	6,0	34,0		▶ 32656
19,0	15	6,0	34,0		▶ 32657
23,0	20	6,0	34,0		● 32658
29,0	25	7,0	50,5		● 32659
41,0	40	7,0	50,5		● 32660
53,0	50	7,0	64,0		● 32661
70,0	65	7,0	91,0		● 32662
85,0	80	7,0	106,0		● 32663
104,0	100	9,0	119,0		● 32664
129,0	125	10,0	144,4		● 32665
154,0	150	10,0	167,0		● 32666
204,0	200	10,0	217,4		● 32667
254,0	250	10,0	268,0		▶ 32668
304,0	300	10,0	319,0		● 32669



Clamppakning N138

DIN Clamppakning

DIN Clamp seal

Dim. mm	DIN DN	NBR	EPDM	VITON	TEFLON
		Varenr. Article no.	Varenr. Article no.	Varenr. Article no.	Varenr. Article no.
13,0	10	● 32670	● 32684	▶ 32698	● 32712
19,0	15	● 32671	● 32685	● 32699	▶ 32713
23,0	20	▶ 32672	● 32686	● 32700	▶ 32714
29,0	25	● 32673	● 32687	● 32701	● 32715
41,0	40	● 32674	● 32688	● 32702	● 32716
53,0	50	● 32675	● 32689	● 32703	● 32717
70,0	65	● 32676	● 32690	● 32704	● 32718
85,0	80	● 32677	● 32691	● 32705	● 32719
104,0	100	● 32678	● 32692	● 32706	● 32720
129,0	125	● 32679	● 32693	● 32707	▶ 32721
154,0	150	● 32680	● 32694	● 32708	▶ 32722
204,0	200	▶ 32681	● 32695	▶ 32709	▶ 32723
254,0	250	▶ 32682	● 32696	▶ 32710	▶ 32724
304,0	300	▶ 32683	● 32697	▶ 32711	▶ 32725



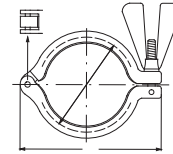
Mini clampspændring N 139

Mini clampspændring, kraftig model

Mini clamp ring, heavy type

Cert.: EN 10204/3.1

Dim. mm	AISI 304
6,0 - 19,0 mm	Varenr. Article no. ● 32726



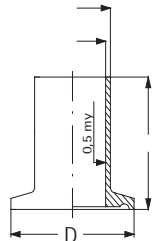
Mini clampkrave N139

Mini clampkrave

Mini clamp ferrule

Cert.: EN 10204/3.1

Dim. mm	L mm	D mm	AISI 316L
6,0	21,5	25,4	Varenr. Article no. ● 32727
8,0	21,5	25,4	● 32728
10,0	21,5	25,4	● 32729
12,0	21,5	25,4	● 32730
14,0	21,5	25,4	● 32731
16,0	21,5	25,4	● 32732
18,0	21,5	25,4	● 32733
19,0	21,5	25,4	● 32734



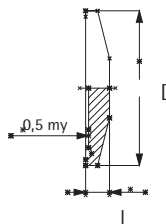
Mini clampblindske N139

Mini clampblindske

Mini clamp blank

Cert.: EN 10204/3.1

Dim. mm	L mm	D mm	AISI 316L
6,0 - 19,0 mm	5,6	25,3	Varenr. Article no. ▶ 32735



Mini clamppakning N139

Mini clamppakning

Mini clamp seal

Dim. mm	EPDM	Viton	TEFLON
	Varenr. Article no.	Varenr. Article no.	Varenr. Article no.
6,0	● 32736	▶ 32744	● 32751
8,0	● 32737	▶ 32745	● 32752
10,0	● 32738	▶ 32746	● 32753
12,0	● 32739	● 32747	● 32754
14,0	● 32740	▶ 32748	▶ 32755
16,0	● 32741	● 32749	▶ 32756
18,0	● 32742	● 32750	● 32757
19,0	● 32743	● 32751	● 32758



Hagenøgle N137

Hagenøgle, universal

Spanner, universal

Cert.: EN 10204/3.1

Dim. mm	Kg/ stk/pc	Varenr. Article no.
25,0 - 76,0	0,310	● 18500
101,6	0,986	● 18501



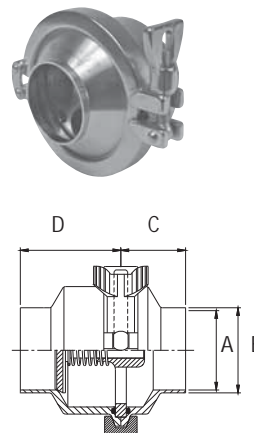
Kontraventil N160

DS 3A-kontraventil med midterclamp og svejseender

DS 3A-check valve, middle clamp and welding end

Cert.: EN 10204/3.1

Dim. mm	Kg/ stk/pc	A mm	B mm	C mm	D mm	AISI 316
						Varenr. Article no.
25,0	1,25	22,6	25,0	38,0	59,0	● 32598
38,0	1,62	35,6	38,0	38,0	59,0	● 32599
51,0	1,93	48,6	51,0	38,0	59,0	● 32600
63,5	2,56	60,5	63,5	38,0	59,0	● 32601
76,1	2,96	72,1	76,1	38,0	59,0	● 32602
101,6	5,45	97,6	101,6	38,0	59,0	● 32603

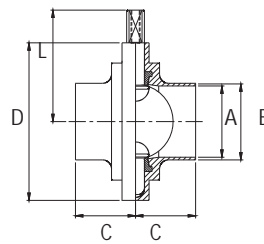


Butterflyventil N160

DS Butterflyventil, med svejseender, EPDM pakning, uden håndtag
 DS Butterfly valve, with welding end, EPDM seal, without handle

Cert.: EN 10204/3.1

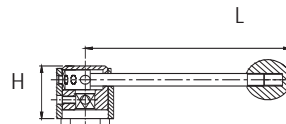
Dim. mm	Kg/ stk/pc	A mm	B mm	C mm	D mm	L mm	AISI 316L	Varenr. Article no.
25,0	0,99	22,6	25,0	34,0	79,0	61,0	● 32592	
38,0	1,19	35,6	38,0	38,0	85,0	64,3	● 32593	
51,0	1,51	48,6	51,0	40,0	105,0	74,3	● 32594	
63,5	1,79	60,5	63,5	40,0	112,0	77,6	● 32595	
76,1	2,41	72,1	76,1	41,0	125,0	84,8	● 32596	
101,6	2,59	97,6	101,6	44,0	157,0	101,6	● 32597	



Håndtag N160

Håndtag til butterflyventil, 4 positioner
 Pull handle for butterfly valve, 4 positions

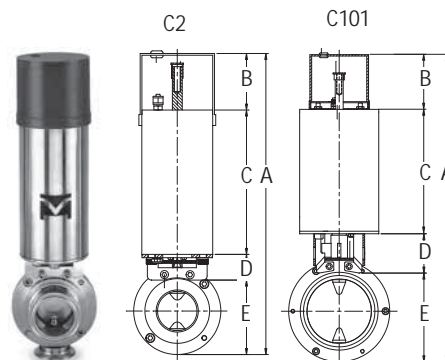
Dim. mm	Kg/ stk/pc	L mm	H mm	AISI 304	Varenr. Article no.
25,0 - 76,1	0,41	135,0	42,0	● 32610	
101,6	0,41	165,0	42,0	● 32615	



Aktuator N160

Aktuator til butterflyventil, uden kontrolboks
 Actuator for butterfly valve, without control box

Dim. mm	Kg/ stk/pc	Type	A mm	B mm	C mm	D mm	E mm	Varenr. Article no.
25,0	3,85	C2	166,0	69,5	174,0	31,0	65,4	● 32604
38,0	3,85	C2	173,0	69,5	174,0	31,0	72,5	● 32604
51,0	3,85	C2	192,0	69,5	174,0	31,0	91,5	● 32604
63,0	3,85	C2	199,0	69,5	174,0	31,0	98,5	● 32604
76,1	3,85	C2	212,0	69,5	174,0	31,0	111,5	● 32604
101,6	4,70	C101	290,0	82,0	190,0	64,0	143,5	● 32605



	C2	C101
Materiale / Material:	AISI 304	AISI 304
Pakning / Seal:	Teflon	Teflon
Lukketid / Closing time:	1,5 sek.	1,7 sek.
Lufttryk / Air pressure:	5-9 bar	5-9 bar
Luftforbrug ved 5 bar / Air consumption at 5 bar:	0,266 l	0,550 l