



Indhold - Svejsefittings / Flanger

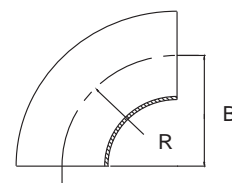
Svejsefittings / Welding fittings	
Bøjninger, svejste / Welded elbowsfra side / from page 78
Bøjninger, sømløse / Seamless elbowsfra side / from page 77
Endebunde / End capsfra side / from page 95
Konusser / Reducersfra side / from page 87
Rørholdere / Pipe supportsfra side / from page 83
Svejsekraver / Welding collarsfra side / from page 97
T-stykker / T-pcs.fra side / from page 91
Flanger / Flanges	
Blindflanger, DIN 2527 / Blind flanges, DIN 2527.fra side / from page 108
Blindflanger, ANSI B16-5 / Blind flanges, ANSI B16-5fra side / from page 109
Gevindflanger, DIN 2566C / Threaded flange, DIN 2566Cfra side / from page 107
Løsfanger, aluminium, DIN 2642 / Loose flanges, aluminum, DIN 2642fra side / from page 99
Løsfanger, galvaniserede, DIN 2642 / Loose flanges, galvanized, DIN 2642fra side / from page 103
Løsfanger, syrefaste, DIN 2642 / Loose flanges, acid-proof, DIN 2642.fra side / from page 100
Plane flanger, DIN 2576 / Flat flanges, DIN 2576.fra side / from page 105
Pressede løsfanger, DIN 2642 / Pressed lap joint flanges, DIN 2642.fra side / from page 102
Svejseflanger, DIN 2633 / Welding flanges, DIN 2633fra side / from page 106



Bøjning N111
Sømløs bøjning, 90°, DIN 2605, norm 3 d
Seamless elbow, 90°, DIN 2605, norm 3 d

Cert.: EN 10204/3.1

Dim. mm	B/R mm	Kg/ stk/pc	EN AISI	1.4404 316L
				Varenr. Article no.
13,5 x 2,3	20,0	0,02	●	20000
15,0 x 1,5	27,5	0,02	●	20001
17,2 x 1,6	28,0	0,03	●	20002
17,2 x 2,3	27,5	0,04	●	20003
18,0 x 1,5	22,5	0,03	●	20004
20,0 x 1,5	25,0	0,03	●	20005
21,3 x 1,6	28,0	0,03	▶	20006
21,3 x 2,6	28,0	0,06	●	20007
23,0 x 1,5	25,0	0,04	▶	20008
25,0 x 1,5	27,5	0,04	●	20009
25,0 x 2,0	27,5	0,05	●	20010
26,9 x 1,6	29,0	0,05	▶	20011
26,9 x 2,6	29,0	0,08	●	20012
28,0 x 1,5	32,5	0,06	●	20013
30,0 x 2,0	33,5	0,07	▶	20014
32,0 x 2,0	35,0	0,10	▶	20015
33,7 x 2,0	38,0	0,10	●	20016
33,7 x 3,2	38,0	0,14	●	20017
35,0 x 2,0	45,0	0,12	▶	20018
38,0 x 2,0	45,0	0,13	▶	20019
40,0 x 2,0	45,0	0,16	▶	20020
42,4 x 2,0	48,0	0,16	▶	20021
42,4 x 3,2	48,0	0,23	●	20022
44,5 x 2,0	51,0	0,17	▶	20024
48,3 x 2,0	57,0	0,22	▶	20025
48,3 x 3,2	57,0	0,32	●	20026
50,0 x 2,0	71,0	0,25	▶	20027
51,0 x 2,6	67,5	0,40	●	20028
54,0 x 2,0	70,0	0,34	●	20029
57,0 x 2,5	75,0	0,42	▶	20030
60,3 x 2,6	76,0	0,44	●	20031
60,3 x 3,6	76,0	0,62	●	20032
64,0 x 2,0	82,5	0,43	▶	20033
70,0 x 2,5	92,0	0,53	▶	20034
76,1 x 2,6	95,0	0,77	●	20035
76,1 x 3,6	95,0	1,08	●	20036
88,9 x 2,6	114,0	1,02	▶	20037
88,9 x 4,0	114,0	1,65	●	20038
108,0 x 4,0	142,5	2,20	●	20039
114,3 x 4,5	152,5	3,00	●	20040



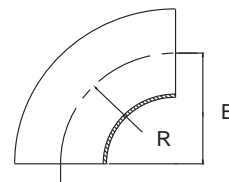
Bøjning N112

Svejst bøjning, 90°, DIN 2605, norm 3 d, ISO

Welded elbow, 90°, DIN 2605, norm 3 d, ISO

Cert.: EN 10204/3.1

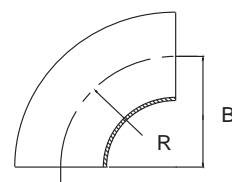
Dim. mm	B/R mm	Kg/ stk/pc	EN 1.4307	EN 1.4404	EN1.4432
			Varenr. Article no.	Varenr. Article no.	Varenr. Article no.
17,2 x 1,6	27,5	0,03	● 20041	● 20042	
17,2 x 2,3	28,0	0,04	▶ 20043	▶ 20044	
21,3 x 1,6	28,0	0,03	● 20051	▶ 20052	
21,3 x 2,0	28,0	0,04	● 20053	● 20054	● 34209
21,3 x 2,6	28,0	0,06	▶ 20055	● 20056	
26,9 x 1,6	29,0	0,05	● 20063	▶ 20064	
26,9 x 2,0	29,0	0,06	● 20065	● 20066	● 34210
26,9 x 2,6	29,0	0,08	● 20067	● 20068	
33,7 x 1,6	38,0	0,08	● 20075	▶ 20076	
33,7 x 2,0	38,0	0,10	● 20077	● 20078	● 34211
33,7 x 3,2	38,0	0,14	● 20079	● 20080	
42,4 x 1,6	48,0	0,13	▶ 20091	● 20092	
42,4 x 2,0	48,0	0,16	● 20093	● 20094	● 34212
42,4 x 3,2	48,0	0,23	● 20095	● 20096	
48,3 x 1,6	57,0	0,19	▶ 20099	▶ 20100	
48,3 x 2,0	57,0	0,22	● 20101	● 20102	● 34213
48,3 x 3,2	57,0	0,32	● 20103	● 20104	
60,3 x 1,6	76,0	0,29	● 20117	▶ 20118	
60,3 x 2,0	76,0	0,40	● 20119	● 20120	● 34214
60,3 x 2,6	76,0	0,50	▶ 20121	▶ 20122	
60,3 x 3,6	76,0	0,62	● 20123	▶ 20124	
76,1 x 2,0	95,0	0,62	● 20135	● 20136	● 34215
76,1 x 2,6	95,0	0,70	▶ 20137	● 20138	
76,1 x 3,0	95,0	0,80	▶ 20139	▶ 20140	
76,1 x 3,6	95,0	1,08	▶ 20141	● 20142	
88,9 x 2,0	114,0	0,81	● 20147	● 20148	● 14030
88,9 x 2,6	114,0	1,00	▶ 20149	▶ 20150	
88,9 x 3,0	114,0	1,20	▶ 20151	▶ 20152	
88,9 x 4,0	114,0	1,65	▶ 20153	● 20154	
101,6 x 2,0	133,0	1,05	● 20155	● 20156	
114,3 x 2,0	152,0	1,30	● 20167	● 20168	● 14032
114,3 x 2,6	152,0	1,70	▶ 20169	▶ 20170	
114,3 x 3,0	152,0	2,00	● 20171	● 20172	
139,7 x 2,0	190,0	2,07	● 14034	● 14035	● 20184
139,7 x 2,6	190,0	2,60	▶ 20185	▶ 20186	
139,7 x 3,0	190,0	3,10	▶ 20187	▶ 20188	
168,3 x 2,0	229,0	3,00	● 14036	● 14037	● 20198
168,3 x 2,6	229,0	3,70	▶ 20199	▶ 20200	
168,3 x 3,0	229,0	4,50	● 20201	● 20202	
219,1 x 2,0	305,0	5,20	● 14038	● 14039	
219,1 x 2,5	305,0	6,50	▶ 20211	▶ 20212	
219,1 x 3,0	305,0	7,80	▶ 32778	● 20213	
273,0 x 3,0	381,0	12,00	● 20221	● 20222	



Bøjning N112
Svejest bøjning, 90°, DIN 2605, norm 3 d, ISO
Welded elbow, 90°, DIN 2605, norm 3 d, ISO

Cert.: EN 10204/3.1

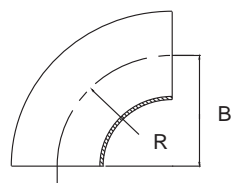
Dim. mm	B/R mm	Kg/ stk/pc	EN 1.4307 Varenr. Article no.	EN 1.4404 Varenr. Article no.	EN1.4432 Varenr. Article no.
323,9 x 3,0	457,0	17,00	● 20229	● 20230	
355,6 x 3,0	533,0	22,00	▶ 20231	● 20232	
406,4 x 3,0	609,5	29,00	▶ 20233	● 20234	
457,0 x 3,0	650,0	36,80	▶ 21070		



Bøjning N112
Svejst bøjning, 90°, DIN 2605, norm 3 d, DIN
Welded elbow, 90°, DIN 2605, DIN

Cert.: EN 10204/3.1

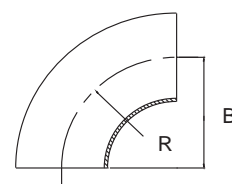
Dim. mm	B/R mm	Kg/ stk/pc	EN 1.4307 Varenr. Article no.	EN 1.4404 Varenr. Article no.	EN1.4432 Varenr. Article no.
18,0 x 1,5	22,5	0,03	● 20045	▶ 20046	
20,0 x 1,5	25,0	0,03	● 20047	● 20048	
20,0 x 2,0	25,0	0,04	▶ 20049	● 20050	
23,0 x 1,5	25,0	0,04	▶ 20057	● 20058	
25,0 x 1,5	27,5	0,04	▶ 20059	▶ 20060	
25,0 x 2,0	27,5	0,05	● 20061	● 20062	
28,0 x 1,5	32,5	0,06	▶ 20069	● 20070	
30,0 x 2,0	33,5	0,07	● 20071	● 20072	
32,0 x 2,0	35,0	0,12	▶ 20073	▶ 20074	
35,0 x 1,5	45,0	0,10	▶ 20081	● 20082	
38,0 x 1,5	45,0	0,11	● 20085	▶ 20086	
38,0 x 2,0	45,0	0,13	● 20087	● 20088	● 34686
40,0 x 2,0	45,0	0,20	● 20089	● 20090	
44,5 x 2,0	51,0	0,17	● 20097	● 20098	● 34687
51,0 x 1,5	67,5	0,21	▶ 20105	▶ 20106	
51,0 x 2,0	67,5	0,31	● 20107	▶ 20108	
53,0 x 1,5	72,5	0,26	▶ 20109	▶ 20110	
54,0 x 2,0	70,0	0,34	● 20111	● 20112	● 34253
57,0 x 2,0	75,0	0,34	● 20113	▶ 20114	
57,0 x 3,0	75,0	0,48	▶ 20115	▶ 20116	
63,5 x 1,5	82,5	0,31	▶ 20125	▶ 20126	
69,0 x 2,0	92,0	0,50	▶ 20129	▶ 20130	
70,0 x 2,0	92,0	0,50	● 20131	● 20132	
84,0 x 2,0	120,0	0,75	● 20143	● 20144	● 14020
86,0 x 3,0	120,0	1,10	▶ 20145	▶ 20146	
104,0 x 2,0	150,0	1,20	● 20157	● 20158	● 14022
105,0 x 2,5	150,0	1,51	▶ 20159	▶ 20160	
106,0 x 3,0	150,0	2,10	▶ 20161	● 13200	
108,0 x 2,0	142,5	1,10	● 20163	▶ 20164	
108,0 x 4,0	142,5	2,20	▶ 20165	▶ 20166	
129,0 x 2,0	188,0	1,90	● 20173	● 20174	● 14025
130,0 x 2,5	187,5	2,35	▶ 20175	▶ 13103	
131,0 x 3,0	187,5	2,95	▶ 20177	● 13201	
133,0 x 3,0	187,5	3,12	▶ 20179	▶ 20180	
133,0 x 4,0	187,5	3,62	▶ 20181	▶ 20182	
154,0 x 2,0	225,0	2,75	● 14026	● 20190	● 14027
155,0 x 2,5	225,0	3,30	▶ 20191	▶ 20192	
156,0 x 3,0	225,0	4,05	▶ 20193	▶ 20194	
158,0 x 4,0	225,0	4,95	▶ 20195	▶ 20196	
204,0 x 2,0	300,0	4,75	● 14028	● 14029	● 20204
205,0 x 2,5	300,0	6,00	▶ 20205	▶ 20206	
206,0 x 3,0	300,0	7,30	▶ 20207	▶ 20208	● 20208
254,0 x 2,0	375,0	7,50	▶ 20215	▶ 20216	● 34688



Bøjning N112
Svejst bøjning, 90°, DIN 2605, norm 3 d, DIN
Welded elbow, 90°, DIN 2605, DIN

Cert.: EN 10204/3.1

Dim. mm	B/R mm	Kg/ stk/pc	EN 1.4307 Varenr. Article no.	EN 1.4404 Varenr. Article no.	EN1.4432 Varenr. Article no.
255,0 x 2,5	375,0	9,40	▶ 20217	▶ 20218	
256,0 x 3,0	375,0	10,85	▶ 20219	● 20220	
304,0 x 2,0	450,0	10,00	● 20223	● 20224	▶ 34254
306,0 x 3,0	450,0	16,10	▶ 20227	● 20228	● 34689



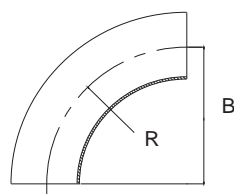
Bøjning N113

Svejst bøjning, 90°, R = d + 100, DIN

Welded elbow, 90°, R = d + 100, DIN

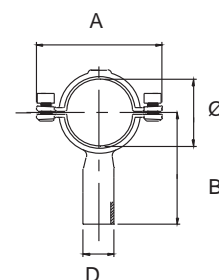
Cert.: EN 10204/3.1

Dim. mm	B/R mm	Kg/ stk/pc	EN 1.4307 AISI 304L Varenr. Article no.	EN 1.4404 AISI 316L Varenr. Article no.	EN 1.4432 AISI 316L Varenr. Article no.
44,5 x 2,0	144,5	0,50	▶ 20237	▶ 20238	
54,0 x 2,0	150,0	0,60	● 20239	● 20240	
69,0 x 2,0	165,0	0,90	▶ 20241	● 20242	
84,0 x 2,0	180,0	1,20	● 20243	● 20244	
85,0 x 2,5	180,0	1,50	▶ 20245	▶ 20246	
86,0 x 3,0	180,0	1,72	▶ 20247	▶ 20248	
104,0 x 2,0	200,0	1,60	● 20249	● 20250	▶ 34690
105,0 x 2,5	200,0	2,00	▶ 20251	▶ 20252	
106,0 x 3,0	200,0	2,40	▶ 20253	▶ 20254	
129,0 x 2,0	225,0	2,20	▶ 20255	● 20256	
130,0 x 2,5	225,0	2,80	▶ 20257	▶ 20258	
131,0 x 3,0	225,0	3,40	▶ 20259	▶ 20260	
154,0 x 2,0	250,0	3,00	▶ 20261	● 20262	
155,0 x 2,5	250,0	3,70	▶ 20263	▶ 20264	
156,0 x 3,0	250,0	4,50	▶ 20265	● 20266	
158,0 x 4,0	250,0	6,10	▶ 20267	▶ 20268	
204,0 x 2,0	300,0	4,80	● 14028	● 20270	
205,0 x 2,5	300,0	6,00	▶ 20271	▶ 20272	
206,0 x 3,0	300,0	7,20	● 20273	● 20274	▶ 34691
254,0 x 2,0	350,0	7,00	● 20275	● 20276	
255,0 x 2,5	350,0	8,70	▶ 20277	▶ 20278	
256,0 x 3,0	350,0	10,00	● 20279	● 20280	
258,0 x 4,0	350,0	14,00	▶ 20281	▶ 20282	
305,0 x 2,5	400,0	12,00	● 20283	▶ 20284	
306,0 x 3,0	400,0	14,00	● 20285	● 20286	
308,0 x 4,0	400,0	19,00	▶ 20287	▶ 20288	
355,0 x 2,5	450,0	16,00	▶ 20289	▶ 20290	
356,0 x 3,0	450,0	19,00	● 20291	● 20292	▶ 34255
358,0 x 4,0	450,0	25,00	▶ 20293	▶ 20294	
406,0 x 3,0	500,0	24,00	● 20295	● 20296	▶ 34256
408,0 x 4,0	500,0	32,00	▶ 20297	▶ 20298	
456,0 x 3,0	550,0	35,20	▶ 20299	▶ 20300	▶ 34257
506,0 x 3,0	600,0	35,00	● 20301	● 20302	▶ 34258
508,0 x 4,0	600,0	48,00	▶ 20303	▶ 20304	
606,0 x 3,0	700,0	66,88	▶ 20386	▶ 20387	▶ 34259
608,0 x 4,0	700,0	66,00	▶ 20305	▶ 20306	
610,0 x 5,0	700,0	83,00	▶ 20307	▶ 20308	



Rørholder N114
Rørholder med svejseskraft og unbrako skrue, ISO
Pipe support with shaft, hexagon socket cap screw, ISO

Dim. mm	B mm	A mm	Ø mm	D mm	Kg/ stk/pc	AISI 304	Varenr. Article no.
10,2	55,0	60,0	12,2	8,0	0,123	●	20310
13,5	57,0	62,0	15,2	8,0	0,129	●	20311
17,2	59,0	68,0	19,2	8,0	0,180	●	20312
21,3	90,0	72,0	23,3	21,3	0,214	●	20313
26,9	90,0	80,0	28,9	21,3	0,222	●	20314
33,7	90,0	87,0	35,7	21,3	0,235	●	20315
42,4	90,0	96,0	44,4	21,3	0,251	●	20316
48,3	90,0	101,0	50,3	21,3	0,258	●	20317
60,3	90,0	113,0	62,3	21,3	0,280	●	20318
76,1	90,0	113,0	78,1	21,3	0,313	●	20319
88,9	90,0	143,0	90,9	21,3	0,332	●	20320
114,3	107,0	167,0	116,3	21,3	0,420	●	20321
139,7	120,0	193,0	141,7	21,3	0,450	●	20322
168,3	134,0	221,0	170,3	21,3	0,514	●	20323
219,1	160,0	272,0	221,1	21,3	0,630	●	20324
273,0	186,0	326,0	275,0	21,3	0,746	●	20325
323,9	212,0	377,0	325,9	21,3	0,862	▶	20326
355,6	228,0	409,0	357,6	21,3	0,936	▶	20327
406,4	253,0	459,0	408,4	21,3	1,050	▶	20328

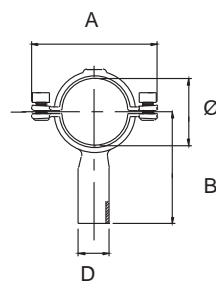


Rørholder N114

Rørholder med svejseskæft og unbrako skrue, DIN

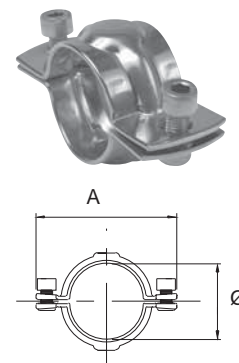
Pipe support with shaft, hexagon socket cap screw, DIN

Dim. mm	B mm	A mm	Ø mm	D mm	Kg/ stk/pc	AISI	304
							Varenr. Article no.
18 - 21,0	90,0	72,0	21,0	21,3	0,209	●	20329
25 - 26,0	90,0	80,0	26,0	21,3	0,224	●	20330
29 - 31,0	90,0	80,0	31,0	21,3	0,225	●	20331
36 - 38,0	90,0	91,0	38,0	21,3	0,242	●	20332
45 - 46,0	90,0	99,0	46,0	21,3	0,256	●	20333
54 - 56,0	90,0	107,0	56,0	21,3	0,271	●	20334
70 - 71,0	90,0	123,0	71,0	21,3	0,298	●	20335
75 - 76,0	90,0	129,0	76,0	21,3	0,307	●	20336
84 - 86,0	90,0	137,0	86,0	21,3	0,323	●	20337
104 - 106,0	102,0	157,0	106,0	21,3	0,368	●	20338
129 - 131,0	105,0	182,0	131,0	21,3	0,420	●	20339
154 - 156,0	128,0	207,0	156,0	21,3	0,479	●	20340
204 - 206,0	152,0	257,0	206,0	21,3	0,533	●	20341
254 - 256,0	177,0	307,0	256,0	21,3	0,705	●	20342
304 - 306,0	203,0	359,0	306,0	21,3	0,821	●	20343
354 - 356,0	228,0	409,0	356,0	21,3	0,931	▶	20344



Rørholder N115
Rørholder i par, med unbraco skrue, ISO
Pipe support in pairs, hexagon cocket cap screw, ISO

Dim. mm	A mm	Ø mm	Kg/ stk/pc	AISI	304
					Varenr. Article no.
17,2	68,0	19,2	0,140	●	20403
21,3	72,0	23,3	0,148	●	20345
26,9	80,0	28,9	0,158	●	20346
33,7	87,0	35,7	0,174	●	20347
42,4	96,0	44,4	0,194	●	20348
48,3	101,0	50,3	0,204	●	20349
60,3	113,0	62,3	0,232	●	20350
76,1	129,0	78,1	0,271	●	20351
88,9	143,0	90,9	0,298	●	20352
114,3	167,0	116,3	0,382	●	20353
139,7	193,0	141,7	0,412	●	20354
168,3	221,0	170,3	0,476	●	20355
219,1	272,0	221,1	0,588	●	20356
273,0	326,0	275,0	0,708	▶	20357
323,9	377,0	325,9	0,824	▶	20358
355,6	409,0	357,6	0,898	▶	20359

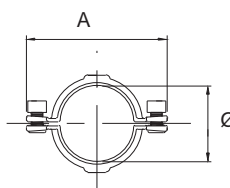


Rørholder N115

Rørholder i par, med unbraco skrue, DIN

Pipe support in pairs, hexagon socket cap screw, DIN

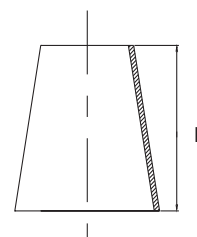
Dim. mm	A mm	Ø mm	Kg/ stk/pc	AISI	304	Varenr. Article no.
18,0 - 21,0	72,0	21,0	0,140			▶ 20360
25,0 - 26,0	80,0	26,0	0,158			● 20361
29,0 - 31,0	80,0	31,0	0,172			● 20362
36,0 - 38,0	91,0	38,0	0,182			● 20363
41,0	92,0	41,0	0,250			● 33422
45,0 - 46,0	99,0	46,0	0,200			● 20364
51,0	103,0	51,0	0,257			● 33423
53,0	103,0	53,0	0,258			● 33424
54,0 - 56,0	107,0	56,0	0,218			● 20365
63,5	116,0	63,5	0,260			● 33425
70,0 - 71,0	123,0	71,0	0,254			● 20366
75,0 - 76,0	129,0	76,0	0,266			● 20367
84,0 - 86,0	137,0	86,0	0,286			● 20368
102,0	154,0	102,0	0,330			● 33426
104,0 - 106,0	157,0	106,0	0,330			● 20369
129,0 - 131,0	182,0	131,0	0,386			● 20370
154,0 - 156,0	207,0	156,0	0,440			● 20371
204,0 - 206,0	257,0	206,0	0,494			● 20372
254,0 - 256,0	307,0	256,0	0,666			● 20373
304,0 - 306,0	359,0	306,0	0,782			● 20374
354,0 - 356,0	409,0	356,0	0,892			● 20375



Konus N124
Svejste konus, koncentrisk, ISO
Welded reducer, concentric, ISO

Cert.: EN 10204/3.1

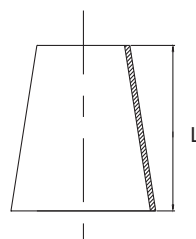
Dim. mm	L mm	Kg/ stk/pc	EN 1.4404 AISI 316L Varenr. Article no.	EN 1.4432 AISI 316L Varenr. Article no.
21,3 x 17,2 x 2,0	12,0	0,040	● 14041	
26,9 x 17,2 x 2,0	29,0	0,048	● 20900	
26,9 x 21,3 x 2,0	17,0	0,020	● 20901	▶ 34299
33,7 x 17,2 x 2,0	49,0	0,045	● 20902	
33,7 x 21,3 x 2,0	37,0	0,050	● 20903	● 34300
33,7 x 26,9 x 2,0	20,0	0,030	● 20904	● 34301
42,4 x 21,3 x 2,0	63,0	0,070	● 20905	▶ 34302
42,4 x 26,9 x 2,0	46,0	0,080	● 20906	● 34303
42,4 x 33,7 x 2,0	26,0	0,050	● 20907	● 34304
48,3 x 21,3 x 2,0	81,0	0,020	● 20908	▶ 34305
48,3 x 26,9 x 2,0	64,0	0,025	● 20909	▶ 34306
48,3 x 33,7 x 2,0	44,0	0,090	● 20910	● 34307
48,3 x 42,4 x 2,0	18,0	0,040	● 20911	▶ 34308
60,3 x 26,9 x 2,0	100,0	0,220	● 20912	▶ 34309
60,3 x 33,7 x 2,0	80,0	0,180	● 20913	● 34310
60,3 x 42,4 x 2,0	54,0	0,140	● 20914	● 34311
60,3 x 48,3 x 2,0	36,0	0,100	● 20915	● 34312
76,1 x 33,7 x 2,0	127,0	0,355	● 20916	▶ 34313
76,1 x 42,4 x 2,0	101,0	0,245	● 20917	▶ 34314
76,1 x 48,3 x 2,0	83,0	0,260	● 20918	● 34315
76,1 x 48,3 x 3,0	83,0	0,390	● 20919	
76,1 x 60,3 x 2,0	47,0	0,160	● 20920	● 34316
76,1 x 60,3 x 3,0	47,0	0,240	● 20921	
88,9 x 42,4 x 2,0	139,0	0,460	● 20922	▶ 34317
88,9 x 48,3 x 2,0	122,0	0,300	● 20923	▶ 34318
88,9 x 60,3 x 2,0	86,0	0,320	● 20924	● 34319
88,9 x 60,3 x 3,0	86,0	0,480	● 20925	
88,9 x 76,1 x 2,0	38,0	0,160	● 20926	● 34320
88,9 x 76,1 x 3,0	38,0	0,240	● 20927	
114,3 x 60,3 x 2,0	162,0	0,570	● 20928	▶ 34321
114,3 x 76,1 x 2,0	115,0	0,622	● 20929	● 34322
114,3 x 76,1 x 3,0	115,0	0,820	● 20930	
114,3 x 88,9 x 2,0	76,0	0,390	● 20931	● 34323
114,3 x 88,9 x 3,0	76,0	0,580	● 20932	
139,7 x 76,1 x 3,0	191,0	1,050	▶ 20933	▶ 34324
139,7 x 88,9 x 2,0	152,0	0,880	● 34708	
139,7 x 88,9 x 3,0	152,0	1,300	● 20934	▶ 34325
139,7 x 114,3 x 2,0	76,0	0,490	● 34709	
139,7 x 114,3 x 3,0	76,0	0,730	● 20935	● 34326
168,3 x 88,9 x 3,0	238,0	2,000	● 20936	▶ 34327
168,3 x 114,3 x 3,0	162,0	1,700	● 20937	▶ 34328
168,3 x 139,7 x 2,0	85,0	0,840	● 34710	
168,3 x 139,7 x 3,0	86,0	1,000	● 20938	▶ 34329



Konus N124
Svejste konus, koncentrisk, ISO
Welded reducer, concentric, ISO

Cert.: EN 10204/3.1

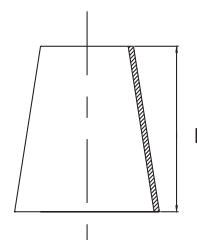
Dim. mm	L mm	Kg/ stk/pc	EN 1.4404	EN 1.4432
			AISI 316L	AISI 316L
			Varenr. Article no.	Varenr. Article no.
219,1 x 139,7 x 2,0	237,0	2,120	● 34711	
219,1 x 139,7 x 3,0	238,0	3,200	● 20939	▶ 34330
219,1 x 168,3 x 2,0	152,0	1,460	● 34712	
219,1 x 168,3 x 3,0	152,0	2,200	● 20940	▶ 34331
273,0 x 168,3 x 3,0	314,0	5,200	● 20941	
273,0 x 219,1 x 3,0	161,0	3,000	● 20942	
323,9 x 219,1 x 3,0	312,0	6,400	● 20943	
323,9 x 273,0 x 3,0	152,0	3,400	● 20944	
355,6 x 273,0 x 3,0	244,0	5,900	▶ 20945	
355,6 x 323,9 x 3,0	94,0	2,400	▶ 20946	
406,4 x 323,9 x 3,0	244,0	6,800	▶ 20947	
406,4 x 355,6 x 3,0	150,0	6,995	▶ 20948	
457,0 x 406,4 x 3,0	150,0	7,560	▶ 20949	



Konus N124
Svejst konus, koncentrisk, DIN
Welded reducer, concentric, DIN

Cert.: EN 10204/3.1

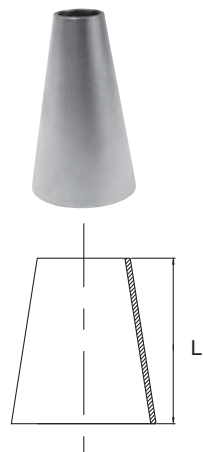
Dim. mm	L mm	Kg/ stk/pc	EN 1.4404	EN 1.4432
			AISI 316L	AISI 316L
			Varenr. Article no.	Varenr. Article no.
25,0 x 20,0 x 2,0	15,0	0,020	▶ 20951	
29,0 x 19,0 x 2,0	30,0	0,026	● 20952	
29,0 x 24,0 x 2,0	15,0	0,030	● 20953	
30,0 x 20,0 x 2,0	30,0	0,050	▶ 20954	
30,0 x 25,0 x 2,0	15,0	0,030	▶ 20955	
36,0 x 24,0 x 2,0	36,0	0,046	● 20956	
36,0 x 29,0 x 2,0	21,0	0,046	▶ 20957	
44,0 x 24,0 x 2,0	60,0	0,077	● 20958	
44,0 x 25,0 x 2,0	57,0	0,072	▶ 20959	
44,0 x 29,0 x 2,0	45,0	0,095	● 20960	
44,0 x 30,0 x 2,0	42,0	0,065	▶ 20961	
44,0 x 36,0 x 2,0	24,0	0,065	▶ 20962	
54,0 x 29,0 x 2,0	75,0	0,175	● 20963	
54,0 x 30,0 x 2,0	60,0	0,135	▶ 20964	
54,0 x 36,0 x 2,0	54,0	0,130	● 20965	
54,0 x 44,0 x 2,0	30,0	0,075	● 20966	
69,0 x 44,0 x 2,0	75,0	0,155	● 20967	
69,0 x 54,0 x 2,0	45,0	0,085	● 20968	
84,0 x 44,0 x 2,0	120,0	0,036	● 20969	
84,0 x 54,0 x 2,0	90,0	0,300	● 20970	● 34338
84,0 x 69,0 x 2,0	45,0	0,215	● 20971	
104,0 x 54,0 x 2,0	150,0	0,570	● 20972	● 34332
104,0 x 69,0 x 2,0	105,0	0,500	● 20973	



Konus N 124
Svejste konus, koncentrisk, DIN
Welded reducer, concentric, DIN

Cert.: EN 10204/3.1

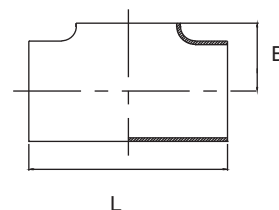
Dim. mm	L mm	Kg/ stk/pc	EN 1.4404	EN 1.4432
			AISI 316L	AISI 316L
			Varenr. Article no.	Varenr. Article no.
104,0 x 84,0 x 2,0	60,0	0,260	● 20974	● 34333
129,0 x 54,0 x 2,0	225,0	1,000	● 20975	▶ 34334
129,0 x 84,0 x 2,0	135,0	0,700	● 20976	▶ 34335
129,0 x 104,0 x 2,0	75,0	0,430	● 20977	● 34336
154,0 x 54,0 x 2,0	300,0	1,470	● 20978	▶ 34337
154,0 x 84,0 x 2,0	210,0	1,670	● 20979	▶ 34360
154,0 x 104,0 x 2,0	150,0	1,280	● 20980	● 34339
154,0 x 129,0 x 2,0	75,0	0,500	● 20981	▶ 34340
204,0 x 104,0 x 2,0	300,0	3,100	● 20982	▶ 34341
204,0 x 129,0 x 2,0	225,0	2,900	● 20983	▶ 34342
204,0 x 154,0 x 2,0	150,0	1,650	● 20984	● 34343
254,0 x 129,0 x 2,0	375,0	3,580	● 20985	▶ 34344
254,0 x 154,0 x 2,0	300,0	1,600	● 20986	▶ 34345
254,0 x 204,0 x 2,0	150,0	1,700	● 20987	▶ 34346
304,0 x 154,0 x 2,0	454,0	5,180	▶ 34713	
304,0 x 204,0 x 2,0	303,0	5,000	● 34714	▶ 34347
304,0 x 254,0 x 2,0	151,0	2,600		▶ 34348
305,0 x 205,0 x 2,5	300,0	3,800	▶ 20988	
305,0 x 255,0 x 2,5	150,0	2,600	▶ 20990	
306,0 x 206,0 x 3,0	300,0	5,700	● 20989	
306,0 x 256,0 x 3,0	150,0	3,200	● 20991	
355,0 x 255,0 x 2,5	300,0	5,700	▶ 20992	
355,0 x 305,0 x 2,5	150,0	3,100	▶ 20994	
356,0 x 206,0 x 3,0	450,0	9,410	▶ 27715	
356,0 x 256,0 x 3,0	300,0	6,900	● 20993	▶ 34349
356,0 x 306,0 x 3,0	150,0	3,700	● 20995	▶ 34350
406,0 x 306,0 x 3,0	300,0	8,000	● 20996	▶ 34351
406,0 x 356,0 x 3,0	150,0	4,300	● 20997	▶ 34352
456,0 x 356,0 x 3,0	300,0	6,995	▶ 20998	▶ 34353
456,0 x 406,0 x 3,0	150,0	7,560	▶ 20999	▶ 34354
506,0 x 306,0 x 3,0	600,0	18,200	▶ 27716	
506,0 x 356,0 x 3,0	450,0	15,000	▶ 27717	
506,0 x 406,0 x 3,0	300,0	10,300	● 14040	▶ 34355
506,0 x 456,0 x 3,0	151,0	18,300		▶ 34356
606,0 x 506,0 x 3,0	303,0	28,300		▶ 34357



T-stykke N127
Svejst t-stykke, opkrævet, DIN
Welded t-pcs., pulled, DIN

Cert.: EN 10204/3.1

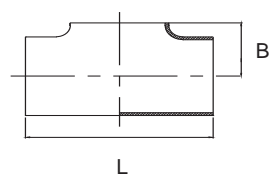
Dim. mm	L mm	B mm	Kg/ stk/pc	EN 1.4404 AISI 316L Varenr. Article no.	EN 1.4432 AISI 316L Varenr. Article no.
38,0 x 2,0	95,0	29,0	0,150	● 21000	
44,5 x 2,0	95,0	34,0	0,135	● 20415	
54,0 x 2,0	114,0	41,0	0,220	● 21001	▶ 34260
70,0 x 2,0	127,0	51,0	0,380	● 20414	
84,0 x 2,0	171,0	58,0	0,570	● 21002	▶ 34261
104,0 x 2,0	210,0	58,0	0,900	● 21003	▶ 34262
105,0 x 2,5	210,0	58,0	1,120	▶ 21004	
106,0 x 3,0	210,0	58,0	1,360	▶ 21071	
129,0 x 2,0	248,0	69,0	1,390	● 21005	▶ 34263
130,0 x 2,5	248,0	74,0	1,750	▶ 21006	
154,0 x 2,0	286,0	84,0	2,000	● 21007	▶ 21072
155,0 x 2,5	286,0	88,0	2,500	▶ 21008	
156,0 x 3,0	300,0	88,0	5,400		● 34715
204,0 x 2,0	356,0	110,0	4,520	● 21009	
205,0 x 2,5	356,0	114,0	5,450	▶ 21010	
206,0 x 3,0	356,0	110,0	5,670	● 21011	● 34716
254,0 x 2,0	432,0	140,0	7,090	● 21012	▶ 34264
255,0 x 2,5	432,0	137,0	8,300	▶ 21013	
256,0 x 3,0	432,0	140,0	8,500	● 21014	
306,0 x 3,0	600,0	168,0	12,730		▶ 34717



T-stykke N127
Svejst t-stykke, opkravet, ISO
Welded t-pcs., pulled, ISO

Cert.: EN 10204/3.1

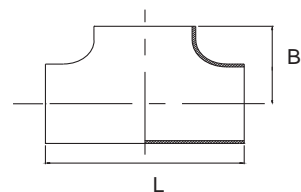
Dim. mm	L mm	B mm	Kg/ stk/pc	EN 1.4404	EN 1.4432
				AISI 316L	AISI 316L
				Varenr. Article no.	Varenr. Article no.
13,5 x 1,6	51,0	12,0	0,030	● 20407	
17,2 x 1,6	51,0	15,0	0,025	● 21039	
17,2 x 2,3	51,0	15,0	0,080	● 21040	
21,3 x 1,6	51,0	18,0	0,150	● 21041	
21,3 x 2,0	51,0	12,0	0,050	● 34721	▶ 34216
21,3 x 2,6	51,0	18,0	0,160	● 21042	
26,9 x 2,0	57,0	22,0	0,170	● 21043	▶ 34217
26,9 x 2,6	57,0	22,0	0,200	● 21044	
33,7 x 2,0	76,0	26,0	0,250	● 21045	▶ 34218
33,7 x 2,6	76,0	24,0	0,300	● 21046	
42,4 x 2,0	95,0	33,0	0,175	● 21047	▶ 34219
42,4 x 2,6	95,0	33,0	0,530	● 21048	
48,3 x 2,0	114,0	37,0	0,490	● 21049	▶ 34220
48,3 x 2,6	114,0	36,0	0,620	● 21050	
60,3 x 2,0	127,0	44,0	0,670	● 21051	▶ 34221
60,3 x 2,6	127,0	44,0	0,850	● 21052	
76,1 x 2,0	152,0	53,0	0,970	● 21053	▶ 34222
76,1 x 3,6	152,0	53,0	1,200	● 21054	
88,9 x 2,0	171,0	60,0	1,240	● 21055	▶ 34223
88,9 x 3,0	171,0	60,0	1,780	● 21056	
114,3 x 2,0	210,0	67,0	1,680	● 21057	▶ 34224
114,3 x 3,0	210,0	67,0	2,260	● 21058	
139,7 x 2,0	248,0	76,0	1,480	● 34722	▶ 34225
139,7 x 2,5	248,0	81,0	2,790	▶ 21059	
139,7 x 3,0	248,0	76,0	3,330	● 21060	
168,3 x 2,0	286,0	92,0	4,400	● 34723	▶ 34226
168,3 x 2,5	286,0	96,0	3,710	▶ 21061	
168,3 x 3,0	286,0	92,0	4,430	● 21062	
219,1 x 2,0	400,0	121,5	9,570		▶ 34227
219,1 x 3,0	356,0	118,0	9,570	● 21064	
219,3 x 2,5	356,0	120,0	7,210	▶ 21063	
273,0 x 3,0	432,0	148,0	14,30	● 21065	
306,0 x 3,0	600,0	168,0	12,73	▶ 34724	
323,9 x 3,0	600,0	172,0	15,62		▶ 34725



T-stykke N128
Svejst t-stykke, presset, DIN 2615, DIN
Welded t-pcs., pressed, DIN 2615, DIN

Cert.: EN 10204/3.1

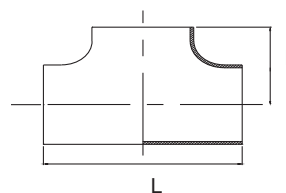
Dim. mm	L mm	B mm	Kg/ stk/pc	EN 1.4404 AISI 316L	1.4435 316L
				Varenr. Article no.	Varenr. Article no.
20,0 x 2,0	50,0	25,0	0,080	● 21019	
25,0 x 2,0	58,0	30,0	0,095	● 21020	
30,0 x 2,0	76,0	35,0	0,100	● 21021	
38,0 x 2,0	86,0	43,0	0,150	● 21022	
38,0 x 2,5	96,0	43,0	0,270	▶ 21023	
44,5 x 2,0	114,0	50,0	0,140	● 21024	
54,0 x 2,0	128,0	61,0	0,220	● 21025	
69,0 x 2,0	152,0	73,0	0,380	● 21026	
70,0 x 2,0	152,0	73,0	0,420	▶ 21027	
84,0 x 2,0	172,0	82,0	0,570	● 21028	
104,0 x 2,0	210,0	98,0	0,900	● 21077	
105,0 x 2,5	210,0	98,0	1,120	▶ 21029	
129,0 x 2,0	230,0	115,0	2,100	● 20419	
156,0 x 3,0	286,0	135,0	4,900	● 20418	
206,0 x 3,0	356,0	170,0	7,600	● 20417	
256,0 x 3,0	400,0	200,0	12,540	● 21076	
304,0 x 2,0	508,0	254,0	13,000		▶ 34265
306,0 x 3,0	508,0	254,0	13,000	● 20420	
356,0 x 3,0	558,0	279,0	18,000	▶ 20421	▶ 34266
406,0 x 3,0	610,0	305,0	28,000	▶ 20422	▶ 34267



T-stykke N128
Svejt t-stykke, presset, DIN 2615, ISO
Welded t-pcs., pressed, DIN 2615, ISO

Cert.: EN 10204/3.1

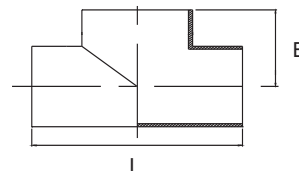
Dim. mm	L mm	B mm	Kg/ stk/pc	EN AISI	1.4404 316L	1.4432 316L
					Varenr. Article no.	Varenr. Article no.
17,2 x 1,6	50,0	25,0	0,070		● 20416	
21,3 x 2,0	50,0	25,0	0,060		● 21030	
26,9 x 2,0	58,0	29,0	0,065		● 21031	
33,7 x 2,0	76,0	38,0	0,110		● 21032	
42,4 x 2,0	96,0	48,0	0,180		● 21033	
48,3 x 2,0	114,0	57,0	0,250		● 21034	
60,3 x 2,0	128,0	64,0	0,480			● 34718
60,3 x 2,6	128,0	64,0	0,340		● 21035	
76,1 x 2,0	152,0	76,0	0,970			▶ 34719
76,1 x 2,6	152,0	76,0	1,200		● 21036	
88,9 x 2,6	172,0	86,0	1,500		● 21037	
114,3 x 2,0	210,0	105,0	1,500			▶ 34720
114,3 x 2,6	210,0	105,0	2,030		● 21038	



T-stykke N129
Svejt t-stykke med indsvejt gren, DIN
Welded t-pcs., with branch, DIN

Cert.: EN 10204/3.1

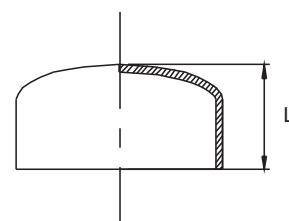
Dim. mm	L mm	B mm	Kg/ stk/pc	EN AISI	1.4404 316L	1.4435 316L
					Varenr. Article no.	Varenr. Article no.
204,0 x 2,0	500,0	250,0	6,3		▶ 21101	
254,0 x 2,0	432,0	216,0	7,5		▶ 21080	
304,0 x 2,0	508,0	254,0	9,7		▶ 21079	
306,0 x 3,0	508,0	254,0	15,3		● 21015	
355,0 x 2,5	720,0	360,0	15,0		▶ 21078	
356,0 x 3,0	558,0	279,0	17,6		● 21016	
406,0 x 3,0	610,0	305,0	24,2		● 21017	
456,0 x 3,0	686,0	343,0	31,2		▶ 21018	▶ 34268
506,0 x 3,0	762,0	381,0	36,0		▶ 27710	▶ 34269
606,0 x 3,0	1000,0	550,0	53,8			▶ 34270



Endebund N140
Endebund, kløpperform, DIN 28011, DIN
End cap, DIN 28011, DIN

Cert.: EN 10204/3.1

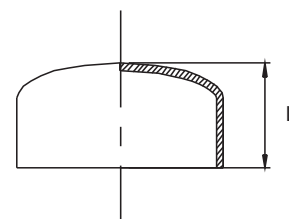
Dim. mm	L mm	Kg/ stk/pc	EN AISI	1.4404 316L
				Varenr. Article no.
54,0 x 2,0	17,0	0,058		● 18250
84,0 x 2,0	24,0	0,136		● 18251
104,0 x 2,0	30,0	0,226		● 18252
129,0 x 2,0	34,0	0,318		● 18253
154,0 x 2,0	40,0	0,448		● 18254
204,0 x 2,0	47,0	0,718		● 18255
256,0 x 3,0	66,0	2,300		● 18256
306,0 x 3,0	75,0	2,700		● 18257
356,0 x 3,0	79,0	3,550		● 18258
406,0 x 3,0	88,0	4,700		● 18259
456,0 x 3,0	108,0	6,200		● 16900
506,0 x 3,0	108,0	7,400		● 16901



Endebund N140
Endebund, DIN 28013, DIN
End cap, DIN 28013, DIN

Cert.: EN 10204/3.1

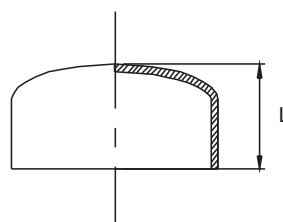
Dim. mm	L mm	Kg/ stk/pc	EN AISI	1.4432 316L
				Varenr. Article no.
104,0 x 2,0		0,226		● 34726
129,0 x 2,0		0,318		● 34727



Endebund N140
 Endebund, kløpperform, DIN 28011, ISO
 End cap, DIN 28011, ISO

Cert.: EN 10204/3.1

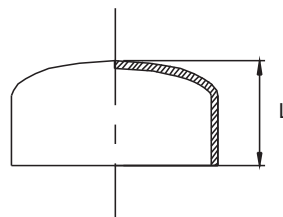
Dim. mm	L mm	Kg/ stk/pc	EN AISI	1.4404 316L Varenr. Article no.
21,3 x 2,0	13,0	0,011		● 18282
26,9 x 2,0	16,0	0,018		● 18281
33,7 x 2,0	13,0	0,025		● 18260
42,4 x 2,0	16,0	0,042		● 18269
48,3 x 2,0	20,0	0,058		● 18261
60,3 x 2,0	19,0	0,078		● 18262
76,1 x 2,0	26,0	0,131		● 18263
88,9 x 2,0	29,0	0,175		● 18264
114,3 x 2,0	28,0	0,243		● 18265
139,7 x 2,0	35,0	0,350		● 18266
168,3 x 2,0	42,0	0,554		● 18267
219,1 x 2,0	54,0	0,830		● 18268
219,1 x 3,0	54,0	1,400		● 34129
273,0 x 3,0	68,0	2,520		● 18270
323,9 x 3,0	72,0	3,150		● 18271



Endebund N140
 Endebund, DIN 28013, ISO
 End cap, DIN 28013, ISO

Cert.: EN 10204/3.1

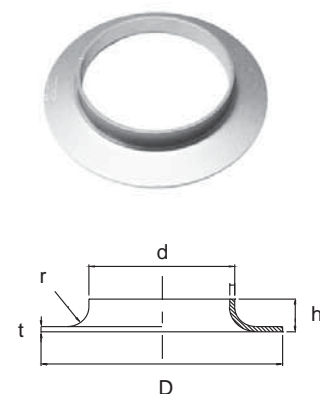
Dim. mm	L mm	Kg/ stk/pc	EN AISI	1.4432 316L Varenr. Article no.
21,3 x 3,0		0,017		● 34728
26,9 x 3,0		0,027		● 34729
33,7 x 3,0		0,038		● 34730
42,4 x 3,0		0,063		● 34731
60,3 x 3,0		0,117		● 34732
76,1 x 3,0		0,197		● 34733
88,9 x 3,0		0,263		● 34734
114,3 x 3,0		0,365		● 34735



Svejskrave N 116
Svejskrave, DIN
Welding collar, DIN

Cert.: EN 10204/3.1

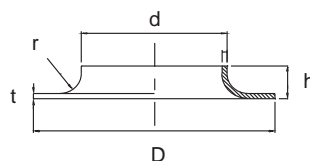
Tils.	Dim. mm	d mm	D mm	t mm	r mm	h mm	Kg/ stk/pc	EN	1.4307 304L	1.4404 316L	1.4432 316L
									Varenr. Article no.	Varenr. Article no.	Varenr. Article no.
15	21,0 x 3,0	21,0	45	3	3	8	0,036		▶ 20840	● 20841	
20	26,0 x 3,0	26,0	58	3	3	8	0,058		▶ 20842	● 20843	
25	31,0 x 3,0	31,0	68	3	4	10	0,082		● 20844	● 20845	
32	38,0 x 3,0	38,0	78	3	4	14	0,125		▶ 20848	● 20849	
40	46,0 x 3,0	46,5	88	3	4	16	0,138		▶ 20850	● 20851	
50	54,0 x 2,0	54,0	102	2	5	12	0,120		● 34793	● 34801	
50	56,0 x 3,0	56,0	102	3	5	16	0,181		● 20852	● 20853	▶ 34271
65	71,0 x 3,0	71,0	122	3	5	19	0,238		▶ 20854	● 20855	
70	76,0 x 3,0	76,0	122	3	5	18	0,256		▶ 20856	▶ 20857	
80	84,0 x 2,0	84,0	138	2	5	13	0,19		● 34794	● 34802	
80	86,0 x 3,0	86,0	138	3	5	20	0,287		● 20858	● 20859	● 34692
100	104,0 x 2,0	104,0	158	2	5	16	0,240		● 34795	● 34803	
100	106,0 x 3,0	106,0	158	3	5	22	0,390		● 20860	● 20861	● 34693
125	129,0 x 2,0	129,0	188	2	5	14	0,310		● 34796	● 34804	
125	131,0 x 3,0	131,0	188	3	5	25	0,499		● 20862	● 20863	● 34694
154	150,0 x 2,0	150,0	212	2	5	18	0,370		● 34797	● 34805	
150	156,0 x 3,0	156,0	212	3	5	25	0,602		● 20864	● 20865	● 34695
200	204,0 x 2,0	204,0	268	2	5	21	0,550		● 34798	● 34806	
200	206,0 x 3,0	206,0	268	3	5	25	0,855		● 20866	● 20867	● 34696
250	254,0 x 2,0	254,0	320	2	5	23	0,690		● 34799	● 34807	
250	256,0 x 3,0	256,0	320	3	5	26	1,071		● 20868	● 20869	● 34697
250	258,0 x 4,0	258,0	320	4	6	30	1,510			● 34698	
300	304,0 x 2,0	304,0	370	2	5	19	0,780		● 34800	● 34808	
300	306,0 x 3,0	306,0	370	3	5	26	1,289		● 20870	● 20871	● 34707
300	308,0 x 4,0	308,0	370	4	6	30	1,800			● 34699	
350	356,0 x 3,0	356,0	430	3	6	26	1,704		● 20872	● 20873	▶ 34279
400	406,0 x 3,0	406,0	480	3	6	30	1,837		● 20874	● 20875	▶ 34280
450	458,0 x 4,0	458,0	530	4	6	30	2,135		▶ 20876	● 20877	▶ 34281
500	508,0 x 4,0	508,0	580	4	6	40	4,086		● 20878	● 20879	▶ 34282
600	606,0 x 3,0	606,0	680	3	6	45	3,900				▶ 34283



Svejskrave N116
Svejskraver, ISO
Welding collar, ISO

Cert.: EN 10204/3.1

Tils.	Dim. mm	d mm	D mm	t mm	r mm	h mm	Kg/ stk/pc	EN 1.4307	1.4404	1.4432
								AISI 304	316L	316L
								Varenr. Article no.	Varenr. Article no.	Varenr. Article no.
10	17,2 x 3,0	17,2	40	3	3	7	0,029		▶ 20880	
15	21,3 x 2,0	21,3	45	2	3	6	0,024		● 34781	
15	21,3 x 3,0	21,3	45	3	3	8	0,036		● 20881	
20	26,9 x 2,0	26,9	58	2	3	8	0,039		● 34782	
20	26,9 x 3,0	26,9	58	3	3	8	0,058		● 20882	▶ 34228
25	33,7 x 2,0	33,7	68	2	4	9	0,053	● 34771	● 34783	
25	33,7 x 3,0	33,7	68	3	4	10	0,080		● 20883	● 34700
32	42,4 x 2,0	42,4	78	2	4	10	0,069	● 34772	● 34784	
32	42,4 x 3,0	42,4	78	3	4	12	0,103		● 20884	▶ 34231
40	48,3 x 2,0	48,3	88	2	4	10	0,089	● 34773	● 34785	
40	48,3 x 3,0	48,3	88	3	4	15	0,133		● 20885	▶ 34232
50	60,3 x 2,0	60,3	102	2	5	12	0,115	● 34774	● 34786	
50	60,3 x 3,0	60,3	102	3	5	18	0,173		● 20886	● 34701
65	76,1 x 2,0	76,1	122	2	5	12	0,159	● 34775	● 34787	
65	76,1 x 3,0	76,1	122	3	5	18	0,238		● 20887	● 34702
80	88,9 x 2,0	88,9	138	2	5	13	0,202	● 34776	● 34788	
80	88,9 x 3,0	88,9	138	3	5	22	0,303		● 20888	● 34703
100	114,3 x 2,0	114,3	158	2	5	14	0,245	● 34777	● 34789	
100	114,3 x 3,0	114,3	158	3	5	22	0,368		● 20889	● 34704
125	139,7 x 2,0	139,7	188	2	5	15	0,318	● 34778	● 34790	
125	139,7 x 3,0	139,7	188	3	5	22	0,477		● 20890	▶ 34237
150	168,3 x 2,0	168,3	212	2	5	18	0,379	● 34779	● 34791	
150	168,3 x 3,0	168,3	212	3	5	25	0,569		● 20891	● 34705
200	219,1 x 2,0	219,1	268	2	5	22	0,518	● 34780	● 34792	
200	219,1 x 3,0	219,1	268	3	5	25	0,777		● 20892	● 34706
250	273,0 x 3,0	273,0	320	3	5	26	0,856		● 20893	
300	323,9 x 3,0	323,9	370	3	5	26	1,017		● 20894	
350	355,6 x 3,0	355,6	430	3	6	26	1,704		▶ 20895	
400	406,4 x 3,0	406,4	480	3	6	30	1,837		● 20896	
450	457,0 x 4,0	457,0	530	4	6	30	2,295		▶ 20897	
500	508,0 x 4,0	508,0	580	4	6	40	2,870		● 20898	

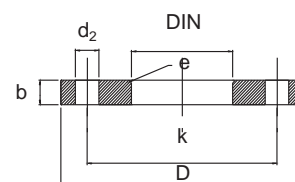


Løsflange N118

Løsflange af aluminium, dim. med red. godstykkelse i henhold til DIN 2642, DIN
Loose flange of aluminum, reduced thickness, finished, DIN 2642, DIN

Farve/Colour: Ral 7001

Tils.	Dim. mm	D mm	DIN mm	b mm	k mm	e mm	d ₂ mm	Bolte/Bolts stk/pc	kg/ stk/pc	Varenr. Article no.
15	20,0	95	23	12	65	3	14	4	0,200	● 32200
20	25,0	105	28	12	75	3	14	4	0,230	● 32201
25	30,0	115	33	12	85	4	14	4	0,280	● 32202
32	38,0	140	41	16	100	4	18	4	0,550	● 32203
40	44,5	150	48	16	110	4	18	4	0,580	● 32204
50	56,0	165	60	16	125	5	18	4	0,730	● 32205
65	71,0	185	73	16	145	5	18	4	0,820	● 32206
80	86,0	200	90	18	160	5	18	8	1,170	● 32207
100	106,0	220	111	18	180	5	18	8	1,220	● 32208
125	131,0	250	136	18	210	5	18	8	1,470	● 32209
150	156,0	285	161	18	240	5	22	8	1,880	● 32210
200	206,0	340	212	20	295	5	22	8	2,750	● 32211
250	256,0	395	264	22	350	5	22	12	3,720	● 32212
300	306,0	445	315	22	400	5	22	12	4,230	● 32213
350	356,0	505	362	22	460	6	22	16	4,740	● 32214
400	406,0	565	413	25	515	6	26	16	6,180	● 32215
450	456,0	615	465	25	565	6	26	20	7,190	● 32216
500	508,0	670	517	28	620	6	26	20	9,470	● 32217
600	610,0	780	618	30	725	6	30	20	15,800	● 32218

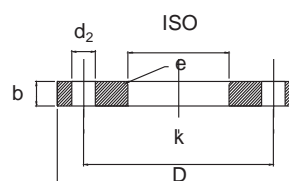


Løsflange N118

Løsflange af aluminium, dim. med red. godstykkelser i henhold til DIN 2642, ISO
Loose flange of aluminum, reduced thickness, finished, DIN 2642, ISO

Farve/Colour: Ral 7001

Tils.	Dim. mm	D mm	DIN mm	b mm	k mm	e mm	d ₂ mm	Bolte/Bolts stk/pc	kg/ stk/pc	Varenr. Article no.
15	21,3	95	24	12	65	3	14	4	0,200	● 32220
20	26,9	105	30	12	75	3	14	4	0,230	● 32221
25	33,7	115	36	12	85	4	14	4	0,280	● 32222
32	42,4	140	46	16	100	4	18	4	0,550	● 32223
40	48,3	150	54	16	110	4	18	4	0,580	● 32224
50	60,3	165	65	16	125	5	18	4	0,730	● 32225
65	76,1	185	81	16	145	5	18	4	0,820	● 32226
80	88,9	200	94	18	160	5	18	8	1,170	● 32227
100	114,3	220	119	18	180	5	18	8	1,220	● 32228
125	139,7	250	145	18	210	5	18	8	1,470	● 32229
150	168,3	285	173	18	240	5	22	8	1,880	● 32230
200	219,1	340	225	20	295	5	22	8	2,750	● 32231
250	273,0	395	279	22	350	5	22	12	3,720	● 32232
300	323,9	445	329	22	400	5	22	12	4,230	● 32233
350	355,6	505	362	22	460	6	22	16	4,740	● 32214
400	406,4	565	413	25	515	6	26	16	6,180	● 32215
450	456,0	615	465	25	565	6	26	20	7,190	● 32216
500	508,0	670	517	28	620	6	26	20	9,470	● 32217
600	610,0	780	618	30	725	6	30	20	15,800	▶ 32238

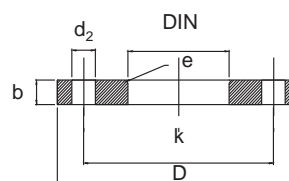


Løsflange N119

Løsflange, NT 10, DIN 2642, DIN
Loose flange, NT 10, DIN 2642, DIN

Cert.: EN 10204/3.1

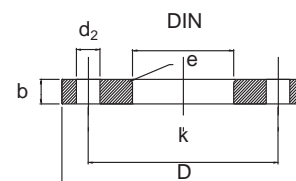
Tils.	Dim. mm	D mm	DIN mm	b mm	k mm	e mm	d ₂ mm	Bolte/Bolts stk/pc	kg/ stk/pc	EN 1.4404 AISI 316L	Varenr. Article no.
50	56,0	165	60	16	125	5	18	4	2,20	● 16720	
80	86,0	200	90	18	160	5	18	8	3,32	● 16721	
100	106,0	220	111	18	180	5	18	8	3,67	● 16722	
125	131,0	250	136	18	210	5	18	8	4,54	● 16723	
150	156,0	285	161	18	240	5	22	8	5,60	● 16724	
200	204,0	340	214	20	295	6	22	8	7,46	▶ 34750	
200	206,0	340	212	20	295	5	22	8	7,46	● 16725	
250	254,0	395	254	22	350	6	22	8	10,30	● 34751	
250	256,0	395	264	22	350	5	22	12	10,30	● 16726	
300	306,0	445	315	26	400	5	22	12	14,00	● 16727	
350	356,0	505	362	28	460	6	22	16	18,50	● 20460	
400	406,0	565	413	32	515	6	26	16	25,50	● 20461	
450	456,0	615	463	38	565	6	26	20	35,00	▶ 20462	
500	508,0	670	517	38	620	6	26	20	41,00	● 20463	



Løsflange N119
Løsflange, NT 16, EN 1092-1 Type 02 (DIN 2642), DIN
Loose flange, NT 16, EN 1092-1 Type 02 (DIN 2642), DIN

Cert.: EN 10204/3.1

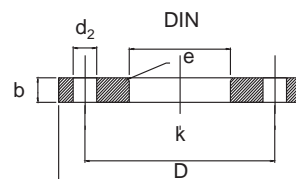
Tils.	Dim. mm	D mm	DIN mm	b mm	k mm	e mm	d ₂ mm	Bolte/Bolts stk/pc	kg/ stk/pc	EN 1.4404 AISI 316L	Varenr. Article no.
100	104,0	220	112	22	180	6	18	8	4,49	●	34752
125	129,0	250	138	22	210	6	18	8	5,55	●	34753
150	154,0	285	164	24	240	6	22	8	7,47	●	34754



Løsflange N119
Løsflange, NT 10, DIN 2642, ISO
Loose flange, NT 10, DIN 2642, ISO

Cert.: EN 10204/3.1

Tils.	Dim. mm	D mm	DIN mm	b mm	k mm	e mm	d ₂ mm	Bolte/Bolts stk/pc	kg/ stk/pc	EN 1.4404 AISI 316L	Varenr. Article no.
50	60,3	165	65	16	125	5	18	4	2,20	●	16729
65	76,1	185	81	16	145	5	18	4	3,00	●	16730
80	88,9	200	94	18	160	5	18	8	3,32	●	16731
100	114,3	220	119	18	180	5	18	8	3,67	●	16732
125	139,7	250	145	18	210	5	18	8	4,54	●	16733
150	168,3	285	173	18	240	5	22	8	5,60	●	16734
200	219,1	340	225	20	295	5	22	8	7,46	●	16735
250	273,0	395	279	22	350	5	22	12	10,30	●	20470
300	323,9	445	329	26	400	5	22	12	14,00	●	20471



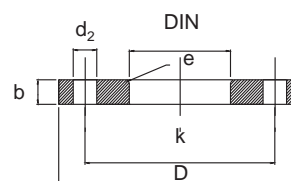
Løsflange N120

Løsflange, NT 16, EN 1092-1 Type 02 (DIN 2642), ISO

Loose flange, NT 16, EN 1092-1 Type 02 (DIN 2642), ISO

Cert.: EN 10204/3.1

Tils.	Dim. mm	D mm	DIN mm	b mm	k mm	e mm	d ₂ mm	Bolte/Bolts stk/pc	kg/ stk/pc	EN 1.4404 AISI 316L	Varenr. Article no.
50	60,3	165	65	20	125	5	18	4	2,67	● 34755	
65	76,1	185	81	20	145	6	18	4	3,24	● 34756	
80	88,9	200	94	20	160	6	18	8	3,52	● 34757	
100	114,3	220	120	22	180	6	18	8	4,25	● 34758	
125	139,7	250	145	22	210	6	18	8	5,26	● 34759	
150	168,3	285	174	24	240	6	22	8	6,95	● 34760	



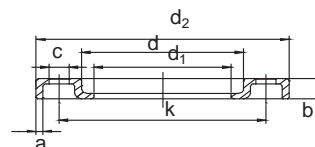
Løsflange N120

Presset løsflange, NT 10, DIN 2642, ISO

Pressed lap joint flange, NT 10, DIN 2642, ISO

Cert.: EN 10204/3.1

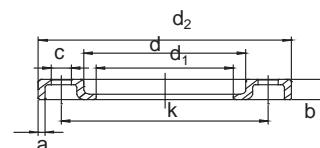
Tils.	Dim. mm	d ₂ mm	d ₁ mm	b mm	k mm	a mm	c mm	Bolte/Bolts stk/pc	kg/ stk/pc	EN 1.4301 AISI 304	1.4404 AISI 316L	Varenr. Article no.	Varenr. Article no.
25	33,7	115	37	16,0	85	3	13,5	4	0,33	● 31156	● 31176		
32	42,4	140	46	16,0	100	3	17,5	4	0,46	● 31157	● 31177		
40	48,3	150	54	17,5	110	4	17,5	4	0,66	● 31158	● 31178		
50	60,3	165	65	19,5	125	4	17,5	4	0,81	● 31160	● 31180		
65	76,1	185	81	21,0	145	4	17,5	4	0,98	● 31161	● 31181		
80	88,9	200	94	21,0	160	4	17,5	8	1,36	● 31163	● 31183		
100	114,3	220	119	22,0	180	4	17,5	8	1,74	● 31165	● 31185		
125	139,7	250	145	22,0	210	5	17,5	8	2,19	● 31167	● 31187		
150	168,3	285	173	26,0	240	5	21,5	8	3,28	● 31169	● 31189		
200	219,1	340	225	28,0	295	6	21,5	8	4,63	● 31171	● 31191		
250	273,0	395	279	31,0	350	6	21,5	12	6,18	● 31173	● 31193		
300	323,9	445	329	34,0	400	6	21,5	12	7,45	● 31175	● 31195		
350	355,6	505	362	36,0	460	8	22,0	16	9,78	● 33213	● 33215		
400	406,4	565	413	38,0	515	8	26,0	16	11,70	● 33214	● 33216		



Løsflange N120
Presset løsflange, NT 10, DIN 2642, DIN
Pressed lap joint flange, NT 10, DIN 2642, DIN

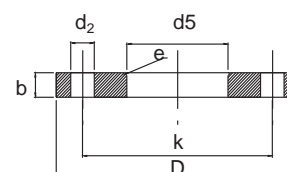
Cert.: EN 10204/3.1

Tils.	Dim. mm	d ₂ mm	d ₁ mm	b mm	k mm	a mm	c mm	Bolte/Bolts stk/pc	kg/ stk/pc	EN AISI	1.4301 304	1.4404 316L
											Varenr. Article no.	Varenr. Article no.
50	56,0	165	58	19,5	125	4	17,5	4	0,81	●	31159	● 31179
65	71,0	185	76	21,0	145	4	17,5	4	1,00	●		● 31695
80	86,0	200	90	22,0	160	4	17,5	8	1,36	●	31162	● 31182
100	106,0	220	110	23,0	180	4	17,5	8	1,74	●	31164	● 31184
125	131,0	250	135	25,0	210	5	17,5	8	2,19	●	31166	● 31186
150	156,0	285	160	27,0	240	5	21,5	8	3,28	●	31168	● 31188
200	206,0	340	212	31,0	295	6	21,5	8	4,63	●	31170	● 31190
250	256,0	395	262	34,0	350	6	21,5	12	6,18	●	31172	● 31192
300	306,0	445	312	38,0	400	6	21,5	12	7,45	●	31174	● 31194
350	356,0	505	362	36,0	460	8	22,0	16	9,78	●	33213	● 33215
400	406,4	565	413	38,0	515	8	26,0	16	11,70	●	33214	● 33216



Løsflange N121
Galvaniseret løsflange, R ST 37-2, NT 10 , DIN 2642, ISO
Galvanized loose flange, R ST 37-2, NT 10, DIN 2642, ISO

Tils.	Dim. mm	D mm	d ₅ mm	b mm	k mm	e mm	d ₂ mm	Bolte/Bolts stk/pc	kg/ stk/pc	R ST 37-2	
											Varenr. Article no.
10	17,2	90	19	14	60	3	14	4	0,599	▶ 22013	
15	21,3	95	24	14	65	3	14	4	0,689	● 20603	
20	26,9	105	30	14	75	3	14	4	0,806	● 20604	
25	33,7	115	36	16	85	4	14	4	1,110	● 20605	
32	42,4	140	46	16	100	4	18	4	1,640	● 20606	
40	48,3	150	54	16	110	4	18	4	1,860	● 20607	
50	60,3	165	65	16	125	5	18	4	2,200	● 20608	
65	76,1	185	81	16	145	5	18	4	2,620	● 20609	
80	88,9	200	94	18	160	5	18	8	3,320	● 20610	
100	114,3	220	119	18	180	5	18	8	3,670	● 20611	
125	139,7	250	145	18	210	5	18	8	4,540	● 20612	
150	168,3	285	173	18	240	5	22	8	5,600	● 20613	
200	219,1	340	225	20	295	5	22	8	7,460	● 20614	
250	273,0	395	279	22	350	5	22	12	10,300	▶ 20615	
300	323,9	445	329	26	400	5	22	12	14,000	▶ 20616	
350	355,6	505	362	28	460	6	22	16	18,000	▶ 20617	

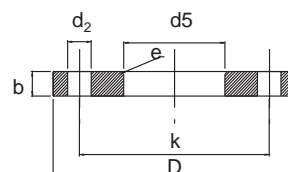


Løsflange N121

Galvaniseret løsflange, R ST 37-2, NT 10 , DIN 2642, DIN

Galvanized loose flange, R ST 37-2, NT 10, DIN 2642, DIN

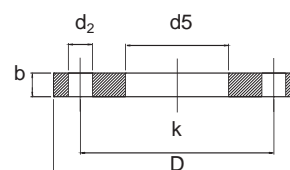
Tils.	Dim. mm	D mm	d ₅ mm	b mm	k mm	e mm	d ₂ mm	Bolte/Bolts stk/pc	kg/ stk/pc	R ST 37-2	Varenr. Articlenf.
100	108,0	220	113	18	180	5	18	8	3,650	●	34746
125	133,0	250	140	18	210	5	18	8	4,540	●	34747
150	159,0	285	165	18	240	5	22	8	5,600	●	34748
200	206,0	340	214	20	295	5	22	8	7,460	●	34749



Plan flange N122
Plan flange til påsvejsning, NT 10, DIN 2576, ISO
Flat flange for welding, NT 10, DIN 2576, ISO

Cert.: EN 10204/3.1

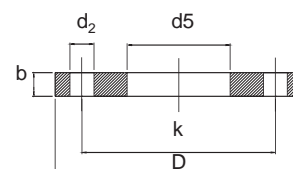
Tils.	Dim. mm	D mm	d ₅ mm	b mm	k mm	d ₂ mm	Bolte/Bolts stk/pc	kg/ stk/pc	EN 1.4404 AISI 316L
									Varenr. Article no.
10	17,2	90	17,7	14	60	14	4	0,605	● 20632
15	21,3	95	22,0	14	65	14	4	0,669	● 20633
20	26,9	105	27,6	16	75	14	4	0,936	● 20634
25	33,7	115	34,4	16	85	14	4	1,110	● 20635
32	42,4	140	43,1	16	100	18	4	1,620	● 20636
40	48,3	150	49,0	16	110	18	4	1,860	● 20637
50	60,3	165	61,1	18	125	18	4	2,470	● 20646
65	76,1	185	77,1	18	145	18	4	3,000	● 20638
80	88,9	200	90,3	20	160	18	8	3,790	● 20639
100	114,3	220	115,9	20	180	18	8	4,030	● 20640
125	139,7	250	141,6	22	210	18	8	5,460	● 20641
150	168,3	285	170,5	22	240	22	8	6,570	● 20642
200	219,1	340	221,8	24	295	22	8	9,310	● 20643
250	273,0	395	276,2	26	350	22	12	11,900	● 20644
300	323,9	445	327,6	26	400	22	12	13,800	● 20645



Plan flange N122
Plan flange til påsvejsning, NT 10, DIN 2576, DIN
Flat flange for welding, NT 10, DIN 2576, DIN

Cert.: EN 10204/3.1

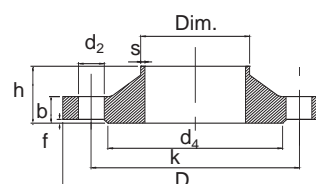
Tils.	Dim. mm	D mm	d ₅ mm	b mm	k mm	d ₂ mm	Bolte/Bolts stk/pc	kg/ stk/pc	EN 1.4404 AISI 316L
									Varenr. Article no.
50	54,0	165	54,5	18	125	18	4	2,47	● 20408
80	84,0	200	85,0	20	160	18	8	3,79	● 20409
100	104,0	220	105,5	20	180	18	8	4,03	● 20410
125	129,0	250	130,5	22	210	18	8	5,46	● 20411
150	154,0	285	155,5	22	240	22	8	6,57	● 20412
200	204,0	340	205,5	24	295	22	8	9,31	● 20413
250	254,0	395	257,0	26	350	22	12	12,50	● 20450
300	306,0	445	309,7	26	400	22	12	15,44	● 20475
350	356,0	505	359,7	28	460	22	16	20,60	● 20476
400	406,0	565	411,0	32	515	26	16	27,90	● 20478
450	456,0	615	462,3	38	565	26	20	35,60	● 20479
500	506,0	670	513,6	38	620	26	20	41,10	▶ 20477



Svejsseflange N123
 Svejsseflange med krave, NT 16, DIN 2633, ISO
 Welding neck flange, NT 16, DIN 2633, ISO

Cert.: EN 10204/3.1

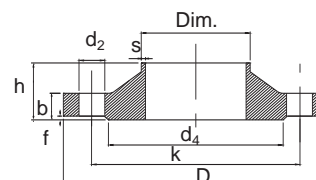
Tils.	Dim.	D	b	k	h	s	d ₄	f	d ₅	Bolte/Bolts	kg/ stk/pc	EN 1.4404 AISI 316L
												Varenr. Article no.
10	17,2	90	14	60	35	1,8	40	2	14	4	0,580	▶ 11039
15	21,3	95	14	65	35	2,0	45	2	14	4	0,580	● 20647
20	26,9	105	16	75	38	2,3	58	2	14	4	0,648	● 20648
25	33,7	115	16	85	38	2,6	68	2	14	4	0,952	● 20650
32	42,4	140	16	100	40	2,6	78	2	18	4	1,140	● 20651
40	48,3	150	16	110	42	2,6	88	3	18	4	1,860	● 20652
50	60,3	165	18	125	45	2,9	102	3	18	4	2,530	● 20653
65	76,1	185	18	145	45	2,9	122	3	18	4	3,060	● 20654
80	88,9	200	20	160	50	3,2	138	3	18	8	3,700	● 20655
100	114,3	220	20	180	52	3,6	158	3	18	8	4,620	● 20656
125	139,7	250	22	210	55	4,0	188	3	18	8	6,300	● 20657
150	168,3	285	22	240	55	4,5	212	3	22	8	7,750	● 20658
200	219,1	340	24	295	62	5,9	268	3	22	12	11,000	● 20659
250	273,0	405	26	355	70	6,3	320	3	26	12	15,600	▶ 20485
300	323,9	460	28	410	78	7,1	378	4	26	12	22,000	▶ 20486
350	355,6	520	30	470	82	8,0	438	4	26	16	31,200	▶ 11040



Svejsseflange N123
 Svejsseflange med krave, NT 16, DIN 2633, DIN
 Welding neck flange, NT 16, DIN 2633, DIN

Cert.: EN 10204/3.1

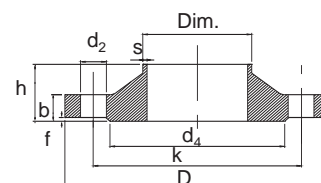
Tils.	Dim.	D	b	k	h	s	d ₄	f	d ₅	Bolte/Bolts	kg/ stk/pc	EN 1.4404 AISI 316L
												Varenr. Article no.
40	44,5	150	16	110	42	2,6	88	3	18	4	1,86	● 21119
50	57,0	165	18	125	45	2,9	102	3	18	4	2,53	● 21120
65	70,0	185	18	145	45	2,9	122	3	18	4	3,06	● 21121
80	84,0	200	20	160	50	3,2	138	3	18	8	3,70	● 21122
100	108,0	220	20	180	52	3,6	158	3	18	8	4,62	● 21123
150	159,0	285	22	240	55	4,5	212	3	22	8	6,30	● 21125



Svejsseflange N123
Svejsseflange med krave, NT 40, DIN 2635, ISO
Welding neck flange, NT 40, DIN 2635, ISO

Cert.: EN 10204/3.1

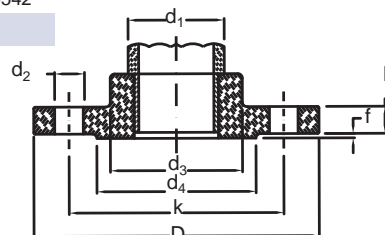
Tils.	Dim.	D	b	k	h	s	d ₄	f	d ₂	Bolte/Bolts	kg/ stk/pc	EN 1.4404 AISI 316L	Varenr. Article no.
15	21,3	95	16	65	38	2,0	45	2	14	4	0,746	● 20660	
20	26,9	105	18	75	40	2,3	58	2	14	4	1,060	● 20661	
25	33,7	115	18	85	40	2,6	68	2	14	4	1,290	● 20662	
32	42,4	140	18	100	42	2,6	78	2	18	4	1,880	● 20663	
40	48,3	150	18	110	45	2,6	88	3	18	4	2,330	● 20664	
50	60,3	165	20	125	48	2,9	102	3	18	4	2,820	● 20665	
65	76,1	185	22	145	52	2,9	122	3	18	8	3,740	● 20666	
80	88,9	200	24	160	58	3,2	138	3	18	8	4,750	● 20667	
100	114,3	235	24	190	65	3,6	162	3	22	8	6,520	● 20668	
125	139,7	270	26	220	68	4,0	188	3	26	8	9,070	● 20669	
150	168,3	300	28	250	75	4,5	218	3	26	8	11,800	● 20670	
200	219,1	375	34	320	88	6,3	285	3	30	12	21,150	● 20671	



Gevindflange N123
Gevindflange, NT 16, DIN 2566C, ISO
Threaded flange, NT 16, DIN 2566C,
ISO

Cert.: EN 10204/3.1

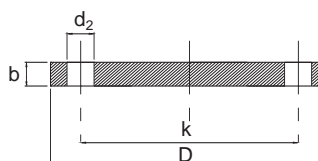
Tils.	Dim.	D	b	k	h ₁	d ₃	d ₄	f	d ₂	Bolte/Bolts	Gevind/ Tread	kg/ stk/pc	EN 1.4571	Varenr. Article no.
1/2"	21,3	95	14	65	20	35	45	2	14	4	M12	0,613	● 29541	
3/4"	26,9	105	16	75	24	45	58	2	14	4	M12	0,910	● 29546	
1"	33,7	115	16	85	24	52	68	2	14	4	M12	1,100	● 29545	
1 1/4"	42,4	140	16	100	26	60	78	2	18	4	M16	1,600	● 29544	
1 1/2"	48,3	150	16	110	26	70	88	3	18	4	M16	1,780	● 29540	
2"	60,3	165	18	125	28	85	102	3	18	4	M16	2,430	● 29543	
2 1/2"	76,1	185	18	145	32	105	122	3	18	4	M16	3,180	● 29539	
3"	88,9	200	20	160	34	118	138	3	18	8	M16	4,120	● 29542	



Blindflange N126
Blindflange, NT 10, DIN 2527
Blind flange, NT 10, DIN 2527

Cert.: EN 10204/3.1

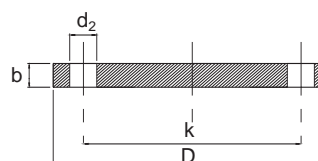
Tils. mm	D mm	b mm	k mm	d ₂ mm	Bolte/Bolts stk/pc	Kg/ stk/pc	EN 1.4404 AISI 316L	Varenr. Article no.
200	340	24,0	295	22	8	16,500	● 20490	
250	395	26,0	350	22	12	24,000	● 20491	
300	445	26,0	400	22	12	30,900	● 20492	
350	505	26,0	460	22	16	40,600	▶ 20493	
400	565	26,0	515	26	16	49,400	▶ 20494	
450	615	28,0	565	26	20	65,000	▶ 20495	
500	670	28,0	620	26	20	75,000	▶ 20496	



Blindflange N126
Blindflange, NT 16, DIN 2527 B
Blind flange, NT 16, DIN 2527 B

Cert.: EN 10204/3.1

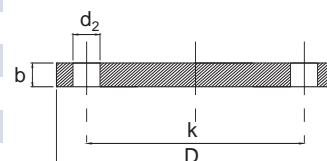
Tils. mm	D mm	b mm	k mm	d ₂ mm	Bolte/Bolts stk/pc	Kg/ stk/pc	EN 1.4404 AISI 316L	Varenr. Article no.
10	90,0	14,0	60,0	14,0	4	0,63	● 20712	
15	95,0	14,0	65,0	14,0	4	0,72	● 20713	
20	105,0	16,0	75,0	14,0	4	1,01	● 20714	
25	115,0	16,0	85,0	14,0	4	1,23	● 20715	
32	140,0	16,0	100,0	18,0	4	1,80	● 20716	
40	150,0	16,0	110,0	18,0	4	2,09	● 20717	
50	165,0	18,0	125,0	18,0	4	2,88	● 20718	
65	185,0	18,0	145,0	18,0	4	3,66	● 20819	
80	200,0	20,0	160,0	18,0	8	4,77	● 20820	
100	220,0	20,0	180,0	18,0	8	5,65	● 20821	
125	250,0	22,0	210,0	18,0	8	8,42	● 20822	
150	285,0	22,0	240,0	22,0	8	10,40	● 20823	
200	340,0	24,0	295,0	22,0	12	16,10	● 20824	
250	405,0	26,0	355,0	26,0	12	24,90	● 20825	
300	460,0	28,0	410,0	26,0	12	35,10	▶ 20826	



Blindflange N126
Blindflange, NT 40, DIN 2527 B
Blind flange, NT 40, DIN 2527 B

Cert.: EN 10204/3.1

Tils.	D mm	b mm	k mm	d ₂ mm	Bolte/Bolts stk/pc	Kg/ stk/pc	EN 1.4404 AISI 316L	Varenr. Article no.
10	90,0	16,0	60,0	14,0	4	0,72	▶ 20827	▶ 20827
15	95,0	16,0	65,0	14,0	4	0,81	▶ 20828	▶ 20828
20	105,0	18,0	75,0	14,0	4	1,24	▶ 20829	▶ 20829
25	115,0	18,0	85,0	14,0	4	1,38	● 20830	● 20830
32	140,0	18,0	100,0	18,0	4	2,03	● 20831	● 20831
40	150,0	18,0	110,0	18,0	4	2,35	● 20832	● 20832
50	165,0	20,0	125,0	18,0	4	3,20	● 20833	● 20833
65	185,0	22,0	145,0	18,0	8	4,29	● 20834	● 20834
80	200,0	24,0	160,0	18,0	8	5,88	● 20835	● 20835
100	235,0	24,0	190,0	22,0	8	7,64	● 33276	● 33276
125	270,0	26,0	220,0	26,0	8	10,80	▶ 20836	▶ 20836
150	300,0	28,0	250,0	26,0	8	14,50	▶ 20837	▶ 20837
200	375,0	34,0	320,0	30,0	12	27,60	▶ 20838	▶ 20838
250	450,0	38,0	385,0	33,0	12	44,50	▶ 20839	▶ 20839



Blindflange N126
Blindflange, 150 LBS, ANSI B16-5
Blind flange, 150 LBS, ANSI B16-5

Cert.: EN 10204/3.1

Tils. mm	D mm	b mm	d ₄ mm	k mm	d ₂ mm	f mm	Bolte/Bolts stk/pc	EN 1.4404	Varenr. Article no.
1 1/4"	117,3	15,7	63,5	88,9	15,7	1,6	4	● 16801	● 16801
1 1/2"	127,0	17,5	73,2	98,6	15,7	1,6	4	● 16802	● 16802
2"	152,4	19,1	91,9	120,7	19,1	1,6	4	● 16803	● 16803
3"	190,5	23,9	127,0	152,4	19,1	1,6	4	● 16805	● 16805
4"	228,6	23,9	157,2	190,5	19,1	1,6	8	● 16806	● 16806
6"	279,4	25,4	215,9	214,3	22,4	1,6	8	● 16808	● 16808
8"	342,9	28,6	269,9	298,5	22,4	1,6	8	● 16809	● 16809

